



# ROSEDALE CHAROLAIS

**29th Annual Bull Sale**

**Friday 18<sup>TH</sup> May 2018 - 12pm**



**60 Polled Charolais Bulls (31 Homozygous) 10 Charolais Females**  
**32 Composite Bulls (21 Charolais/Angus & 11 Charolais/Shorthorn)**

# LEADING from the front FOR OVER 45 YEARS

Rosedale Charolais are your proven source of top quality polled Charolais genetics.

Rosedale continues to lead the way in Australia's carcass competitions with unrivalled success in recent times. This is a true reflection that our breeding program is on the right track and that our genetics are out performing in a commercial situation.

We have a wide range of bulls to cover all Australian domestic & export markets including stud sire duties. We welcome your inspection and stand 100% behind the bulls we put on offer. We focus on growth and meat quality and this reflected in our carcass competition success.

Now with a branded product for Rosedale Customers there is no better place to source your bulls for maximum crossbreeding profitability.

Our cattle are specifically bred for profitable cross-breeding under Australian conditions.

## ROSEDALE'S PROVEN COMMERCIAL PERFORMANCE IN AUSTRALIA'S BIGGEST INDEPENDENT FEEDLOT TRIALS.

### NSW BEEF SPECTACULAR FEED LOT TRIAL

- 2013** Grand Champion Team, Most Profitable Team Reserve Champion Weight Gain
- 2014** 3 Teams in the Top 10 (out of 120 entered) 2nd Most Profitable Team
- 2016** Champion Weight Gain, Most Profitable Team 5th & 6th Overall (76 Teams)
- 2017** Reserve Champion Weight Gain, 2nd most profitable Team. 3rd Overall
- 2018** Riverine Classic Champion

### AUSTRALIAN NATIONAL FIELD DAYS TRIAL

- 2012** Grand Champion Team, 1st Carcass Yield
- 2013** 1st Carcass Yield, 2nd Carcass Points 4th overall
- 2014** Champion Individual Steer 2nd Saleable Meat Yield
- 2015** Highest Carcass Points, 2nd Saleable Meat Yield, 3rd gain on Grass, 3rd/20 overall
- 2017** Grand Champion Team, 1st and 2nd Carcass and yield.

### ROYAL AGRICULTURAL SOCIETY BEEF CHALLENGE

- 2012** Grand Champion Domestic Team Reserve Champion Single Steer 2nd Most Profitable Team
- 2013** Grand Champion Export Team Most Profitable Team, 2nd Carcass Yield
- 2015** Grand Champion Domestic Team, 1st Carcass yield, Most Profitable Team (34 teams)
- 2016** Grand Champion Export Team, Champion Liveweight Assessment, 4th Domestic Team (53 Teams)

(Competitions entered recently)



[www.rosedalecharolais.com.au](http://www.rosedalecharolais.com.au)



# ROSEDALE CHAROLAIS

## 29th ANNUAL SALE

Friday, 18th May, 2018 at 12.00 noon  
on property at "Rosedale" Blayney

### 90 BULLS

**60** Purebred Polled Charolais (37 Homozygous Polled)

**32** F1 Bulls - 18 Rosedale Blacks (Cha/Ang)

- 3 Charolais/Angus (Grey)

- 11 Charolais/Shorthorn

**10** Purebred Females

#### James Millner

Mobile: 0425 341 341

millner@rosedalecharolais.com.au

www.rosedalecharolais.com.au

#### Michael and Jenny Millner

Ph: (02) 6368 7195

Mobile: 0409 682 339



**auctionsplus**

*agricultural auctions at a click*



Todd Clements - 0429 070 225



Paul Dooley - 0458 662 646



BATHURST - (02) 6331 7788

Andy McGeoch - 0418 737 470

Andrew Bickford - 0427 943 781



# Welcome

Welcome back to the 29th Rosedale Charolais Annual Bull Sale.

Your long-term breeding programs and long-term profitability have been our primary focus this year. At the time of writing this catalogue, we (and many other NSW producers) are facing challenging conditions, with the total amount of rainfall measured in the last 12 months one of the lowest on record. Despite this, we remain optimistic. You will notice that livestock condition scores are hanging on well, and with all things considered, you have observed that prices continue to stand-up even as stock hit the market.

This gives us confidence in the strength of the cattle industry. The calves bred this year will not be sold for at least 2 years and it is important to us that your breeding programs are not impacted by the short-term challenges of a drought. When the break comes, we strongly believe prices will react accordingly.

The Rosedale brand continues to excel and the past 12 months have been particularly rewarding for our family. It was a humbling acknowledgment of our breeding history to be named the "2017 Australian Beef Farmers of the Year". The award recognised the years of hard work and dedication poured into the business, and ultimately the success is evident in the bulls on offer today.

2017 was a strong year on the Feedlot Trial Circuit, with Rosedale winning

- The MSA Eating Quality Award at the Brisbane Show
- The Riverine Tendercut Champions at the NSW Beef Spectacular
- The Australian National Field Days Feedlot Trial, for the third time, and
- A Rosedale-bred Charolais steer bred winning the Silver Medal in the Carcase Section of the 2018 Sydney Royal Easter Show.

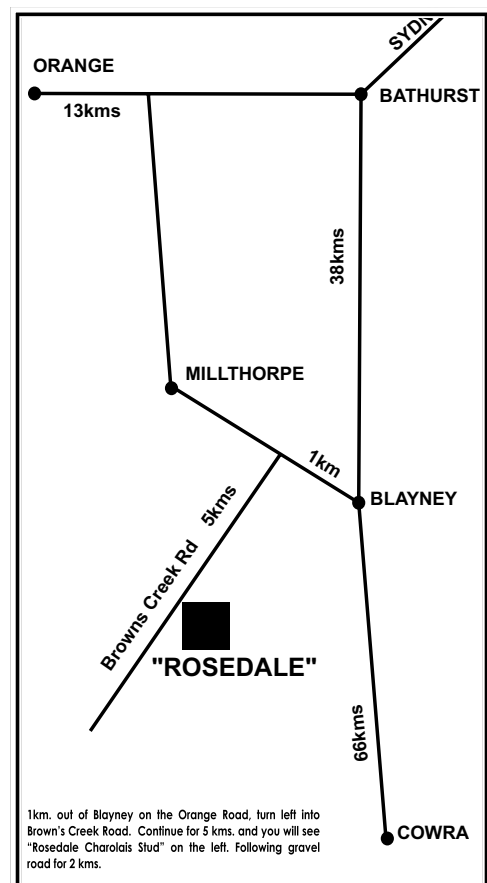
This year, we are extremely impressed with the presentation of the bulls as well as the depth and quality of our offering. The bulls have handled the drier conditions very well. We have purposefully selected a range of types of bull to suit your different operations and uses. The most important thing our bulls have in common is the focus on growth, carcase quality and marbling, as well as structural soundness and visual appeal. All bulls purchased in this sale come with the Rosedale 12-month guarantee for fertility and structure. We stand 100% behind our breeding program and are willing to back the quality of these bulls. Success for us is realised when we see the dozens of buyers who return each year from across Australia.

As a new initiative this year, and for the benefit of our clients, we have introduced the Rosedale Ruby Supply Chain. Please turn to the back of the catalogue more information. This is exclusive to Rosedale Clients and provides an opportunity for greater returns, a secure market, as well as establishing a feedback loop between us and selected cattle growers. In the past year, more than 2000 head of cattle from our bull clients have gone into our beef supply chain, and we want to continue to serve our clients with a secure point of sale in this way. By entering into the Rosedale Ruby Supply Chain, we can guarantee you an "Angus rate" for Charolais x Angus cattle. It has been a step forward for our industry to achieve this and we believe this opportunity will continue to stand Rosedale clients in good stead for the future. This has always been our end goal.

Sale bulls are available for viewing at any time leading up to the sale. You are welcome to call us to arrange an inspection or to answer any queries you may have. Supplementary information and pictures of all lots will be available on our web site, [rosedalecharolais.com.au](http://rosedalecharolais.com.au) as well as Rosedale's Auctionsplus sale page.

Thank you for taking time to view our 2018 sale catalogue and we look forward to welcoming you to Rosedale on sale day.

Michael, Jenny and James Millner



# Sale Information

## ROSEDALE SALE BULL EBV'S

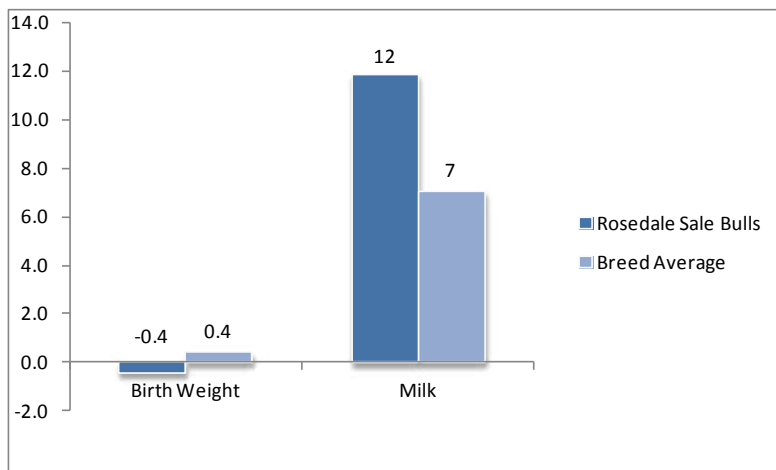
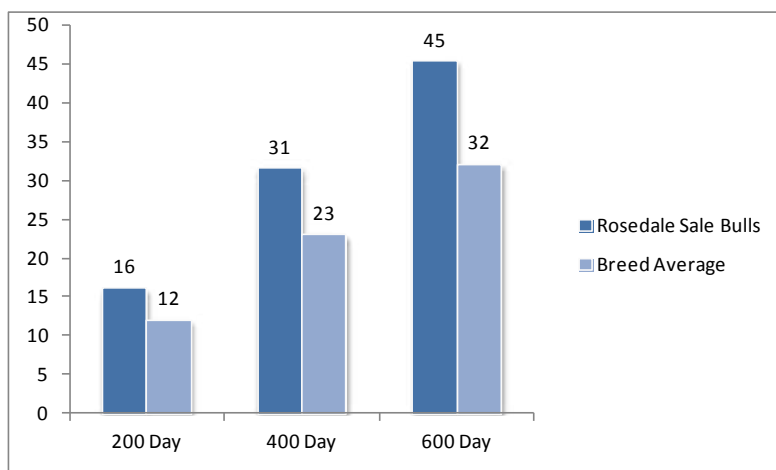
Rosedale has been a member of breedplan for over 30 years. This has helped assist us to consistently retain and source external genetics that have enabled us to produce the types of cattle you see in our paddocks today.

Genetic gain in growth rates has always been a priority of ours, but we understand sensible calving ease and birthweights need to be maintained. With our own commercial herd of 1000 British bred cows, we are very familiar with the benefits our charolais bulls are delivering in a crossbreeding situation.

The graphs shown are a good 'measuring stick' as to where our sale bulls are compared to the Australian Charolais breed average.

Although we understand that EBV's are not everything we believe they do help to illustrate the types of bulls we are aiming to produce. We submit large amounts of meaningful data each year to breedplan to help ensure the information is as accurate as it can be.

*At Rosedale we are always looking to improve our genetic pool in an effort to further satisfy our clients.  
We welcome all feedback you may have on our breeding program and objectives.*



## VISUAL ASSESSMENT

When choosing bulls we recommend using a combination of EBVs, Raw Data and visual assessment. Visual assessment is essential to assess physical and structural soundness and is a reasonable indicator of health and temperament.

EBV's are a tool that will help you to make more "educated" decisions when you are choosing breeding stock. Do your homework well before the sale when you have plenty of time and set some parameters for your EBVs that fall within your market requirements, to narrow down potential purchases.

Use this "suitable list" of bulls and spend time looking and assessing the physical characteristics that you require.

## CARING FOR YOUR NEW BULL

Always be considerate to your bulls and handle them with respect and kindness. Handle them quietly, walk them rather than rushing them, treat them with care and in a gentle manner and they will do likewise.

A bull leaving ROSEDALE is leaving the security of a large mob and will arrive in a strange environment at the purchaser's property. Unload him and make sure he has a steer or cow as a companion straight away if you can't put him out into your bull mob immediately.

A young bull can move in with older bulls and settle well, but remember, being the youngest he will get the last of any feed available because of the pecking order. The paddock needs to be reasonably large so he can keep away from the others and find adequate feed. Young bulls are still growing fast and need enough feed to maintain their growth pattern and be able to settle the cows quickly and efficiently.

ROSEDALE bulls are used to being handled by stockmen on motor bikes. Most of the fences are electrified and the bulls treat them with respect.

# Sale Information

**INSPECTION:** cattle inspections are welcome at any time prior to the sale by arrangement with the Vendor. Cattle will be yarded into pens by 9am sale day.

**MORNING TEA & LUNCH:** Will be available, Lunch provided by Smoking Brothers from Elwoods eatery in Orange and will showcase some of our Rosedale Ruby Beef.

**HEALTH:** All bulls catalogued have been semen tested and examined by Peter Brown of Bovine Breeders for structural soundness. All of our cattle receive 7 in 1 vaccinations at 4 months of age, then 6 weeks later and an annual booster. They were drenched at weaning and periodically according to worm counts. Cattle were last drenched with Flukozole C together with a 5in1 in March. The sale bulls have been vaccinated for Pestivirus (BVDV).

**All sale bulls have been DNA tested for Pestivirus and are all PI negative.**

**RAW DATA:** All bulls will be scanned prior to the Sale for eye muscle area (EMA), rump and rib fat, marbling (IMF%) as well as sale weight and scrotal measurements. Supplementary sheet available on the day and on the rosedale website, along with photos of all the lots.

**ROSEDALE'S 12 MONTH GUARANTEE:** All stock have been evaluated for structural soundness and fertility. To the best of our knowledge the bulls are in sound working order at the time of the sale. Any claim against the breeding ability or a structural breakdown of any animal must be made in writing and accompanied by a Veterinary Certificate within 12 months of the sale date. Any animal failing to breed may be either replaced with an animal of similar value or credit made available to the value of the purchase price, minus salvage value, for use at a future Rosedale sale. The Purchaser will be responsible for any costs incurred.

**DELIVERY:** A delivery instruction slip must be completed and signed. Stock awaiting delivery will be held free of charge - all care will be taken, but absolutely no responsibility will be accepted for any injury or loss occasioned during, as a consequence of, or in relation to any holding. Rosedale offers a free delivery service locally and to Dubbo. We are more than happy to assist with all deliveries, please speak to us as we will go out of our way to help you get your purchases home safely and economically. We also can deliver cattle to CTLX, which is a transport hub for most major carriers.

**INSURANCE:** Ownership passes at the fall of the hammer. An insurance representative will be in attendance on Sale day.

**TELEPHONE LINK-UP:** Mobile telephones will be available. Please arrange with the Vendor or Agent to ensure a line.

**AUCTIONS PLUS:** Our sale is conducted live on line in real time and will be interfaced on Auctions Plus with the physical auction that is being conducted. A computer is used to bring the on-site bid price to the internet screen for remote bidders to observe. Bidders can bid on computers at their location and the bid is immediately transferred to the auction barn and relayed to the auctioneer. Bidding is only available if registered with Auctions Plus. You must register on-line to their website [www.auctionsplus.com.au](http://www.auctionsplus.com.au) - at least 24 hours prior to the sale. For first time users of Auctions Plus we recommend you register as soon as possible and become familiar with the site. The staff in Sydney are very helpful and happy to guide you through it.

For more information contact:- Auctions Plus - (02)9262 4222

**4% REBATE:** The rebate will be offered to outside agents on the condition that a written introduction is received 48 hours prior to the sale and/or the agent accompanies the purchaser to the sale and settles on their behalf within 7 days. (This clause will be strictly adhered to.)

**TERMS AND CONDITIONS:** Terms of the sale are as per Conditions of Sale NSW Stud Stock.

**PLEASE NOTE:** It is unethical for anyone to promote, advertise or arrange the sale of any cattle, other than those in this sale on this sale premises.

**SALE DAY SAFETY:** All sale bulls have been screened for temperament and are quiet to handle under normal circumstances. However, there are risks associated with cattle handling. **Visitors enter the cattle pens at their own risk. Children must not enter pens.** People entering the yards are at risk of injury. Be especially alert for bulls fighting, and please be aware that the unfamiliar crowds of people seen at sale day places extraordinary pressure on them.

**DISCLAIMER:** People entering upon this property for any purpose whatsoever including attendance at cattle auctions do so at their own risk. We are not liable to you for any personal injury or death suffered by you and for theft loss or damage to any property caused or contributed to by us or by any other person whether caused or contributed to by or by negligence deliberate act or unlawful conduct. "We" or "us" or "our" refer to the owners their employees contractors and agents and each of them. While every care has been taken in compiling this catalogue to ensure accuracy of information supplied no responsibility is accepted for any errors which may have occurred.

# Performance Recording - Breedplan EBV's - How to use them

All bulls in this sale have been managed under identical conditions from the point of weaning, therefore comparisons can be made between animals of similar age. Weights, scans of EMA and IMF% and scrotal measurements will be available on the day of sale to further aid your visual assessment.

**Charolais Group Breedplan** is an advanced genetic evaluation system that provides a genetic description of Charolais cattle for a range of traits influencing fertility, growth and carcase performance. It provides predictions of the genetic merit of individual animals called Estimated Breeding Values (EBVs). EBVs are based on all the available pedigree and performance records provided by breeders in Australia and New Zealand, along with available overseas genetic information. EBVs are expressed in the units of measurement for each particular trait and are shown as +ive or -ive values. The Charolais breed average EBV for different traits changes over time as the breed makes genetic progress. The absolute value of any EBV is not critical, but rather the differences in EBVs between animals. Particular animals should be viewed as being "above or below breed average" for a particular trait. The averages for calves born in 2014 are shown below and at the bottom of the Performance Data Summary. Please note that each breed has their own EBV and cannot be compared across breeds. **All EBVs quoted in this catalogue are Charolais Group Breedplan EBVs and are directly comparable with the EBVs from other Charolais Group Breedplan herds.**

## How to use EBVs

To use these figures successfully you must first determine which characteristics you desire to breed for and then select the EBV which best supports these qualities. It is important to note that in a successful breeding programme it is advisable to maintain balance and not to direct effort toward gaining a single, higher EBV for one particular trait.

**Birth Weight** is a major factor in calving difficulty. Use this EBV to select against birth weight if calving is a problem. The lower the EBV the lighter the calves are expected to be at birth.

**200 Day Growth and Milk** is of particular interest to those targeting high weight gains at an early age to supply to the Domestic and Restaurant trade. Milk should be emphasized if the bull is being used to breed replacement progeny.

**400 and 600 Day Growth** indicates animals with superior weight gains from 12 months to 2 years of age, which would optimize profits in the domestic to Jap Ox markets.


**Accuracy (Acc.%)** provides an indication of the reliability of an EBV. As more performance information becomes available on an animal, it's progeny and relatives, the accuracy of it's EBVs for particular traits increases. The higher the accuracy the less chance the figure for each EBV will vary.

**Index Values** are reported as EBVs, in units of relative earning capacity (\$'s) for a given market. They reflect both the short-term profit generated by a sire through the sale of his progeny, and the longer-term profit generated by his daughters in a self-replacing cow herd. A selection index combines the EBVs with economic information (costs and returns) for specific market and production systems to rank animals based on relative profit values. Note that different types of animals can give similar profit values, so consideration should be given to both the index and the component EBVs when selecting animals for a particular production system.

**Domestic Index(\$)** Estimates the genetic differences between animals in net profitability per cow joined for an example commercial herd with a British cow base targeting grass-finished production for the domestic trade. This Index assumes pasture grown & finished steers weighing 430kgs (240kg HSCW and 6mm P8 fat) at 12 months. Daughters are retained or sold for breeding therefore maternal traits are of importance. In response to industry feedback, positive emphasis has been placed on finishing ability.

**Export Index(\$)** Estimates the genetic differences between animals in net profitability per cow joined for an example commercial herd with a British cow base targeting the production of steers for export markets. This Index assumes pasture grown & finished steers weighing 700kg (380kg HSCW and 9mm P8 fat) at 29 months. Daughters are retained or sold for breeding therefore maternal traits are of importance. In response to industry feedback, positive emphasis has been placed on finishing ability.

**Scrotal Size** is a good indicator of the bull's ability to produce sperm. A 2 year old bull with a testicle size of 34cm or more is regarded as satisfactory. Measurements will be available sale day.

Average Group Breedplan EBV's for 2015 born calves - March 2017 data.																	
	Calve ease direct (%)	Calve ease dtrs (%)	Gest length (days)	Birth Wt (kg)	200 Day Wt (kg)	400 Day Wt (kg)	600 Day Wt (kg)	Mat Cow Wt (kg)	Milk	Mat Value (kg)	Scr Size (cm)	Carc Wt (kg)	Eye mscl area (cm²)	Rib fat (mm)	Rump fat (mm)	Retail beef yield (%)	IMF (%)
EBV	+1.4	+0.9	-2.5	+0.4	+12	+23	+31	+33	+7	+33	+1.1	+19	+1.1	+0.2	+0.4	+0.0	+0.2
Represents top 25% or better of Charolais Breed												\$ Index Value		+\$23		+\$32	



# Sire ROSEDALE HARRY (AI) (P)

**Born:** 30/03/2012  
**Society ID:** MRH16E

LT RIO BLANCO 1234 P (P)  
SVY PIONEER 402P (D)  
SVY JINGLES 153L  
**Sire: SVY PILGRIM PLD 655S (P)**  
RGP EUREKA 17E (P)  
HFCC FRENCHKISS 919J  
QCR FRENCHKISS 33F P  
  
LT WYOMING WIND LD (P)  
DSK WW YABBA DABBA DO Y4 (AI)  
PALGROVE ESTELLA 31 (AI) (ET) (H)  
**Dam: ROSEDALE CANDY C36 (P)**  
MINNIE-VALE DEPUTY (P)  
ROSEDALE CANDY Z34 (P)  
ROSEDALE CANDY U109 (P)



A homozygous polled homebred sire bred from the Successful Ai Sire SVY Pilgrim. Harry progeny combine the muscle and growth of Pilgrim with the maternal quality's from Yabba on his Dam side of the pedigree. We have retained a lot of his daughters as future breeders. [Trait Leader 200, Day Growth and Scrotal](#)

Charolais Group Breedplan EBV's - March, 2016

	DIR	DTRS	GL	BWT	200	400	600	MWT
	+3.0	-8.1	-4.2	-0.3	+23	+32	+41	+39
	69%	54%	75%	95%	85%	91%	89%	78%
MILK	SS	CWT	EMA	RIB	RMP	RBV	IMF	
	+6	+2.7	+22	+1.4	+0.8	+1.2	-0.3	+0.5
	63%	86%	77%	65%	77%	70%	65%	
Index \$ Value	Domestic (\$)				Export (\$)			
	+\$ 30				+\$ 43			

# Sire ROSEDALE H168 (P)

**Born:** 05/10/2012  
**Society ID:** MRH168E

FERNVALE RIPPER FENRIE (H)  
FERNVALE TRAPPER FENTSOE (H)  
FERNVALE PRIMADONNA (AI) (ET) (D)  
**Sire: ROSEDALE DARWIN (P) MRD122E (P)**  
WCR SIR DUKE 835 M (P)  
ROSEDALE GRACE A97 (AI) (ET) (P)  
ROSEDALE GRACE T9 (P)  
  
NOVOTEL (H)  
PARINGA NOVOTEL A100 (AI) (ET) (P)  
PARINGA FASTRACK Y654 (AI) (ET) (P)  
**Dam: ROSEDALE BEATRIX D148 (P)**  
ROSEDALE WILLIE (P)  
ROSEDALE BEATRIX Z185 (P)  
ROSEDALE BEATRIX W119 (H)



This year presents the first opportunity to secure progeny from H168, another homozygous polled homebred sire who is breeding extremely well. Above average growth for Age, Positive Fat Cover and marbling ability. A new age sire that is taking our breeding herd in a direction we are very comfortable with. [Trait Leader 600 Day Growth](#)

Charolais Group Breedplan EBV's - March, 2016

	DIR	DTRS	GL	BWT	200	400	600	MWT
	+5.9	-2.1	-0.9	+0.5	+14	+33	+51	+60
	66%	48%	58%	94%	83%	89%	87%	77%
MILK	SS	CWT	EMA	RIB	RMP	RBV	IMF	
	+16	+0.9	+26	+0.9	+0.9	+1.4	-1.1	+0.9
	59%	74%	76%	59%	75%	74%	66%	60%
Index \$ Value	Domestic (\$)				Export (\$)			
	+\$ 41				+\$ 59			

# Sire ASCOT GRAND REDEMPTION (P)

**Born:** 08/09/2011  
**Society ID:** JAJG52E

SCHURRTOP 5627 (H)  
LT WYOMING WIND 4020 PLD (P)  
LT CHAP'S LADY 217 OP (H)  
**Sire: HARVIE REDEMPTION 36P (R/F)**  
HARVIE JAGER 65J (P)  
HARVIE MS MOLSON 53M (P)  
HARVIE MISS FIREFLY 31F (P)  
  
LT UNLIMITED EASE 9108 (H)  
BALDRIDGE FASTRACK 82E M447863 (P)  
BALDRIDGE SWEETHEART 53D (P)  
**Dam: GOBONGO JULIETTE B43E (AI) (P)**  
GOBONGO VILLEROY V80E  
GOBONGO JULIETTE Z15E (D)  
GOBONGO JULIETTE (D)



We purchased the Walking Rights to this bull in a partnership with Australian Livestock Genetics. A top class performer and we are very impressed by the progeny we have so far. Consistent breeding with progeny that excel in both growth and carcass. [Trait Leader for 200, 400, 600 Day growth, CWT, Rib and Rump Fat and Scrotal.](#)

Charolais Group Breedplan EBV's - March, 2016

	DIR	DTRS	GL	BWT	200	400	600	MWT
	-2.8	-2.5	-3.0	+0.3	+28	+50	+64	+50
	72%	57%	83%	94%	85%	90%	89%	83%
MILK	SS	CWT	EMA	RIB	RMP	RBV	IMF	
	+8	+3.4	+36	+0.6	+1.9	+2.6	-1.2	+0.4
	71%	86%	79%	68%	80%	80%	73%	69%
Index \$ Value	Domestic (\$)				Export (\$)			
	+\$ 40				+\$ 61			



# Sire ROSEDALE KAVIAR (P)

**Born:** 10/04/2014  
**Society ID:** MRK20E

NOVOTEL 5897127519 OAFS7519F (H)  
PARINGA NOVOTEL A100 (AI) (ET) (P)  
PARINGA FASTRACK Y654 (AI) (ET) (P)  
**Sire: ROSEDALE FAIRLANE (P)**  
COBRABALD WINSTON (AI) (P)  
ROSEDALE HONOR A118 (H)  
ROSEDALE HONOR V11 (AI) (H)

M6 GRID MAKER 104 PET M633377 (P)  
EC NO DOUBT 2022 P M685500 (P)  
EC LADY DUKE 2022 P (P)  
**Dam: ROSEDALE NET E58 (AI) (P)**  
GUNNADOO YUPPY (P)  
ROSEDALE NET B195 (P)  
ROSEDALE NET V59 (P)



A thick bodied, soft coated and growthy homozygous polled bull we bred ourselves. Very impressed by his first lot of progeny in this sale. Calves are born small and grow out extremely well. (Pictured above at 12 months) **Trait leader for birthweight, 200, 400 & 600 day growth. Top 1% Export Ind**

Charolais Group Breedplan EBV's - March, 2016

	DIR	DTRS	GL	BWT	200	400	600	MWT
	+11.5	-3.8	-5.1	-1.8	+22	+44	+65	+76
	61%	44%	59%	90%	75%	81%	81%	73%
MILK	SS	CWT	EMA	RIB	RMP	RBV	IMF	
	+15	+2.0	+38	+0.9	+0.8	+1.1	-0.4	+0.4
	50%	69%	69%	56%	70%	69%	63%	54%
Index \$ Value	Domestic (\$)				Export (\$)			
	+\$ 59				+\$ 86			

# Sire ROSEDALE JUKE (AI) (ET) (P)

**Born:** 23/07/2013  
**Society ID:** MRJ297E

ABC LATORO 263G  
SPARROWS DURANGO 585  
SPARROWS BLANCHE 585G  
**Sire: WINN MANS LANZA 610S (P) OACB7395E (P)**  
MERIT 5133E PED-3791E  
WINN MAN MERIT 036K PED-7547E  
MERIT SMOOTHIE 8073H  
FERNVALE RIPPER FENR1E (H)  
FERNVALE TRAPPER FENT50E (H)  
FERNVALE PRIMADONNA (AI) (ET)  
**Dam: ROSEDALE REBECCA A38 (P) MRA38E (P)**  
ROSEDALE SNAG (AI) (P) MRS138E (P)  
ROSEDALE REBECCA V56 (P) M



A new Rosedale Bred Homozygous Polled sire we have used quite heavily in Breeding programs over the past 18 months. Will have more progeny around next year. **Trait leader 200, 400 and 600 Day Growth.**

Charolais Group Breedplan EBV's - March, 2016

	DIR	DTRS	GL	BWT	200	400	600	MWT
	+2.7	+1.4	-5.6	-0.5	+15	+36	+57	+48
	61%	49%	77%	84%	71%	73%	77%	68%
MILK	SS	CWT	EMA	RIB	RMP	RBV	IMF	
	+12	+3.3	+29	+0.9	+0.2	-0.1	-0.1	+0.2
	55%	63%	63%	47%	56%	55%	51%	47%
Index \$ Value	Domestic (\$)				Export (\$)			
	+\$ 36				+\$ 54			

# Sire ROSEDALE DEALER (P) (R/F)

**Born:** 24/07/2008  
**Society ID:** MRD45E

WCR SIR FA MAC 2244 M 234430 (P)  
PALGROVE STAND OUT (AI) (H)  
PALGROVE ESTELLA 34 (AI) (ET) (P)  
**Sire: GUNNADOO YUPPY (P)**  
GUNNADOO NORMAC N160E (AI) (P)  
GUNNADOO CINDY R34E (AI) (P)  
GUNNADOO GLORIA N105D GN1N105D (D)  
COBRABALD PICASSO (AI) (P)  
MINNIE-VALE DEPUTY (P)  
MINNIE VALE PEANUT (D)  
**Dam: ROSEDALE BUTTERSCOTCH Y47 (P) (R/F)**  
2UP THE VEGEMITE KID (AI) (P)  
ROSEDALE BUTTERSCOTCH V150 (P)  
ROSEDALE BUTTERSCOTCH Q142 (H)



A smooth and soft Red Factor outcross polled bull we have used in recent times in various AI programs. Was a high selling bull in our 2010 sale to Weebolla Shorthorns. His progeny are moderate framed and offer a lot in terms of shape and softness. Some very handy sons in this sale.

Charolais Group Breedplan EBV's - March, 2016

	DIR	DTRS	GL	BWT	200	400	600	MWT
	+2.7	0.0	-1.5	+0.1	+9	+25	+39	+42
	58%	49%	65%	79%	70%	67%	69%	65%
MILK	SS	CWT	EMA	RIB	RMP	RBV	IMF	
	+14	+0.6	+28	+0.7	+0.2	+0.3	-0.1	-0.2
	60%	54%	58%	43%	48%	48%	46%	43%
Index \$ Value	Domestic (\$)				Export (\$)			
	+\$ 29				+\$ 42			

# Sire LT LONG DISTANCE (P)

Born: 09/02/2009  
Society ID: OAE143E

S\$ MONTANA SILVER M454024 (P)  
LT SILVER YIELD 3196 (P)  
LT CAROL 8131  
**Sire: LT SILVER DISTANCE 5342 (P)**  
BBCR SIR MAC 112 P/S (H)  
LT MATTIE 9026 (P)  
LT UNLTD WILLOW 7090 PLD (P)  
  
LT UNLIMITED EASE 9108 (H)  
LT EASY PRO 1158 PLD (P)  
LT LADY MACBETH 8413 ETP  
**Dam: LT BELLE 7026 (P)**  
LT UNLIMITED EASE 9108 (H)  
LT BELLE 5110 (P)  
LT BELLE 3076 PED-9435E



Long Distance is a High Calving Ease bull that we have used on heifers to calve down as 2 year olds. Has some smart looking progeny in the sale with steady growth and excellent carcass quality traits. [Trait Leader DIR](#), [Gest Length](#), [Birth Weight](#), [Rib Fat](#); [Top 5% Rump Fat](#) & [IMF](#)

## Charolais Group Breedplan EBV's

	DIR	DTRS	GL	BWT	200	400	600	MWT
	+17.2	+1.4	-9.9	-4.6	+2	0	+7	-38
	80%	64%	95%	95%	90%	91%	91%	83%
MILK	SS	CWT	EMA	RIB	RMP	RBV	IMF	
	+14	+0.2	0	-0.1	+2.6	+3.4	-2.0	+1.2
	78%	90%	78%	67%	81%	80%	72%	68%
Index \$ Value	Domestic (\$)				Export (\$)			
	+\$ 42				+\$ 60			

# Sire LT VENTURE (P)

Born: 11/03/2013  
Society ID: OAUJ5612E

LT WESTERN SPUR 2061 PLD M645785 (P)  
LT WESTERN EDGE 4057 PLD M686616 (P) OAUZ6616E (P)  
LT DUCHESS OF MAC 7076 P  
**Sire: LT STAGECOACH 8068 PLD (P) OAUD7606E (P)**  
LT WYOMING WIND 4020 PLD (P) OAU4020E (P)  
LT LADY MACBETH 2131 PLD PED-6197E  
LT LADY MACBETH 8413 ETP PED-2754E  
  
LT UNLIMITED EASE 9108 OAUJ9108E (H)  
LT EASY PRO 1158 PLD (P) OAUW6203E (P)  
LT LADY MACBETH 8413 ETP PED-2754E  
**Dam: LT BALLET 9219 (P) OAE7686E (P)**  
EATONS LEADER 2233 P M652217 (P) OAU2217E (P)  
LT BALLET 6233 OAU6957E (H)  
LT BALLET 0024 (P) OAU3127E (P)  
LT BRENDA 1014 PLD



He was one of the feature bulls in the Lindskov-Thiel Ranch Bull Sale. Progeny are soft, and structurally very correct. [Trait leader Birthweight](#), [DIR](#) and [Scrotal](#), [IMF](#); [Top 5% Rib Fat](#) Domestic & Export Indexes

## Charolais Group Breedplan EBV's

	DIR	DTRS	GL	BWT	200	400	600	MWT
	+13.0	+2.6	-5.3	-3.8	+16	+42	+45	+24
	69%	45%	91%	91%	84%	86%	83%	72%
MILK	SS	CWT	EMA	RIB	RMP	RBV	IMF	
	+17	+3.1	+38	+2.4	+2.9	+3.8	-1.5	+0.3
	52%	82%	71%	58%	72%	72%	63%	58%
Index \$ Value	Domestic (\$)				Export (\$)			
	+\$ 77				+\$ 103			

# studstocksales.com



@struanp



studstocksales.com

# Performance Data Summary

Lot	Birth Weight	200 Day Growth	400 Day Growth	600 Day Growth	Milk
1	-0.9	+23	+46	+64	+10
2	-0.3	+20	+38	+60	+11
3	-0.9	+23	+51	+67	+15
4	-1.2	+18	+40	+54	+15
5	+0.6	+22	+41	+60	+10
6	-0.6	+12	+25	+37	+11
7	+0.4	+23	+37	+57	+8
8	-0.7	+24	+48	+80	+14
9	+0.4	+15	+25	+38	+9
10	+0.4	+17	+34	+56	+14
11	-1.4	+10	+24	+31	+13
12	+1.6	+15	+31	+46	+9
13	-2.6	+14	+27	+33	+13
14	-0.7	+9	+24	+28	+11
15	0.0	+17	+35	+54	+15
16	+0.5	+17	+32	+48	+12
17	+1.3	+18	+37	+58	+14
18	+1.1	+26	+51	+76	+11
19	-0.3	+17	+34	+51	+13
20	+0.7	+13	+27	+42	+11
21	+1.4	+13	+29	+46	+16
22	-0.7	+19	+39	+60	+13
23	-2.2	+7	+18	+21	+11
24	-3.4	+11	+23	+24	+11
25	0.0	+13	+29	+45	+9
26	+0.1	+15	+23	+32	+8
27	-0.3	+15	+31	+46	+14
28	-0.8	+15	+30	+48	+14
29	+1.0	+23	+37	+50	+7
30	-0.4	+19	+35	+54	+12
31	-0.4	+18	+36	+54	+13
32	+0.0	+19	+34	+47	+10
33	-0.1	+7	+15	+17	+9
34	-0.6	+15	+27	+32	+7
35	-0.1	+18	+27	+37	+10
36	+0.3	+20	+35	+49	+8
37	-0.1	+18	+33	+45	+10
38	-1.2	+19	+32	+46	+12
39	-1.0	+21	+40	+54	+13
40	-1.9	+15	+30	+42	+13

Lot	Birth Weight	200 Day Growth	400 Day Growth	600 Day Growth	Milk
41	-2.8	+11	+27	+32	+18
42	-0.7	+17	+33	+46	+11
43	-1.6	+14	+27	+38	+11
44	-1.3	+18	+34	+49	+11
45	-0.5	+11	+23	+35	+15
46	+0.1	+19	+39	+63	+14
47					
48	-1.2	+8	+19	+22	+9
49	-0.5	+15	+31	+49	+11
50	-0.6	+19	+31	+44	+10
51	+0.2	+13	+29	+43	+15
52	-1.1	+17	+34	+49	+13
53	-1.4	+7	+8	+4	+10
54	+0.2	+18	+26	+35	+7
55	-0.6	+10	+16	+17	+11
56	-0.3	+18	+36	+55	+14
57	-1.5	+16	+33	+49	+11
58	-0.1	+15	+33	+50	+15
59	+0.1	+17	+29	+47	+12
60	+1.4	+16	+29	+40	+17



For more photos go to  
[www.rosedalecharolais.com.au](http://www.rosedalecharolais.com.au) or  
[www.auctionsplus.com.au](http://www.auctionsplus.com.au)

Breed average EBV's for 2016 born calves					
	Birth Wt	200 Day	400 Day	600 Day	Milk
EBV	+0.4	+12	+23	+32	+7
Represents top 25% or better of Charolais Breed					



# 1 ROSEDALE MOREGAIN (P)

Born: 16/08/2016  
Society ID: MRM186E

LT WYOMING WIND 4020 PLD (P)  
HARVIE REDEMPTION 36P MC286641 (P) (R/F)  
HARVIE MS MOLSON 53M (P)  
**Sire: ASCOT GRAND REDEMPTION G52E (AI) (P)**  
BALDRIDGE FASTTRACK 82E M447863 (P)  
GOBONGO JULIETTE B43E (AI) (P)  
GOBONGO JULIETTE Z15E GOZ15E (D)

PALGROVE STAND OUT (AI) (H)  
GUNNADOO YUPPY (P)  
GUNNADOO CINDY R34E (AI) (P)  
**Dam: ROSEDALE RUBY C77 (P)**  
FERNVALE TRAPPER FENT50E (H)  
ROSEDALE RUBY X105 (P)  
ROSEDALE RUBY U14 (P)



## Comments

**Top 1% 200, 400 & 600 Day Growth**  
**Top 10% Domestic & Export Indexes**  
**Top 15% Birth Weight**  
**Top 20% Milk**

A long thick and soft Bull with huge Stud Sire Potential. Top 1% for all growth traits and as good a temperament as you will find. A strong sirely outlook and beautifully balanced. Soft skinned with depth and evenness, this is a great bull to start the sale and not to be missed. **HOMOZYGOUS POLLED**

Purchaser

\$

## Index \$ Value

Domestic (\$)			Export (\$)		
+\$ 43			+\$ 63		
Charolais Group Breedplan EBV's					
	Birth Weight	200 day growth	400 day growth	600 day growth	Milk
EBV	-0.9	+23	+46	+64	+10
ACC	73%	63%	68%	65%	50%
Raw Data					
Weight	P8	Rib	EMA	IMF %	Scrotal

# 2 ROSEDALE MUSCLE MAN (AI) (P)

Born: 27/07/2016  
Society ID: MRM65E

SPARROWS DURANGO 585P PED-9528E  
WINN MANS LANZA 610S (P)  
WINN MAN MERIT 036K PED-7547E  
**Sire: ROSEDALE JUKE (AI) (ET) (P)**  
FERNVALE TRAPPER FENT50E (H)  
ROSEDALE REBECCA A38 (P)  
ROSEDALE REBECCA V56 (P)

NOVOTEL 5897127519 OAFS7519F (H)  
PARINGA NOVOTEL A100 (AI) (ET) (P)  
PARINGA FASTRACK Y654 (AI) (ET) (P)  
**Dam: ROSEDALE DAFFODIL H29 (P)**  
DSK WW YABBA DABBA DO Y4 (AI)  
ROSEDALE DAFFODIL E255 (P)  
ROSEDALE DAFFODIL X76 (P)



## Comments

**Top 5% 200, 400 & 600 Day Growth**  
**Top 10% Domestic & Export Indexes**  
**Top 15% Milk**  
**Top 25% Birth Weight**

A bigger and more rugged bull here once again with outstanding EBV's. Muscle Man is one of the highest performing bulls in the sale and will certainly pack growth into his progeny. A top of the class commercial Charolais sire with excellent growth and carcase traits.

Purchaser

\$

## Index \$ Value

Domestic (\$)			Export (\$)		
+\$ 44			+\$ 68		
Charolais Group Breedplan EBV's					
	Birth Weight	200 day growth	400 day growth	600 day growth	Milk
EBV	-0.3	+20	+38	+60	+11
ACC	72%	60%	63%	69%	42%
Raw Data					
Weight	P8	Rib	EMA	IMF %	Scrotal

1



2



3

## ROSEDALE MERGER (AI) (P)

Born: 02/08/2016

Society ID: MRM129E

LT WESTERN EDGE 4057 PLD M686616 (P)  
 LT STAGECOACH 8068 PLD (P)  
 LT LADY MACBETH 2131 PLD PED-6197E

Sire: LT VENTURE 3198 (P)

LT EASY PRO 1158 PLD (P)  
 LT BALLET 9219 (P)  
 LT BALLET 6233 OAUB6957E (H)

Dam: ROSEDALE BEATRIX K61 (P)

NWMSU DOC SILVER 362 PLD M669488 (P)  
 ASCOT DOC SILVER G100E (AI) (ET) (P/S)  
 PARINGA RIO BRAVO E310 (AI) (ET) (P)  
 PALGROVE EXPO (AI) (ET) (P)  
 ROSEDALE BEATRIX G231 (P)  
 ROSEDALE BEATRIX B108 (P)



## Comments

**Top 1% 200, 400 & 600 Day Growth, Domestic & Export Indexes**  
**Top 5% Milk**  
**Top 15% Birth Weight**

Merger is a bull we have a lot of time for and feel he could also be suitable for stud Sire duties. One of the best calves we have seen from the US\$50,000 Lt Venture sire. This bull has growth, softness, structure and presence. A clear cut top shelf bull.

Purchaser

\$

## Index \$ Value

Domestic (\$)	Export (\$)
+\$ 63	+\$ 88

## Charolais Group Breedplan EBV's

	Birth Weight	200 day growth	400 day growth	600 day growth	Milk
EBV	-0.9	+23	+51	+67	+15
ACC	72%	62%	65%	70%	35%

## Raw Data

Weight	P8	Rib	EMA	IMF %	Scrotal

4

## ROSEDALE MERCADO (AI) (P)

Born: 03/08/2016

Society ID: MRM79E

LT WESTERN EDGE 4057 PLD M686616 (P)  
 LT STAGECOACH 8068 PLD (P)  
 LT LADY MACBETH 2131 PLD PED-6197E

Sire: LT VENTURE 3198 (P)

LT EASY PRO 1158 PLD (P)  
 LT BALLET 9219 (P)  
 LT BALLET 6233 OAUB6957E (H)

Dam: ROSEDALE GOLDEN GIRL J310 (H)

PARINGA NOVOTEL A100 (AI) (ET) (P)  
 ROSEDALE FRONTIER (P)  
 ROSEDALE NICKY X7 (AI) (P)  
 MINNIE-VALE DEPUTY (P)  
 ROSEDALE GOLDEN GIRL Z71 (P)  
 ROSEDALE GOLDEN GIRL V105 (P)



## Comments

**Top 5% 400 & 600 Day Growth, Milk, Domestic & Export Indexes**  
**Top 10% 200 Day Growth**  
**Top 15% Birth Weight**

A fantastic bull and potentially the star lot in the sale. Growth for age, curve bending EBV's and spot on all round carcass attributes. By the highly regarded and proven LT Venture out of one of our very best young females. This bull has pedigree, class and performance, Semen share retained.

Purchaser

\$

## Index \$ Value

Domestic (\$)	Export (\$)
+\$ 51	+\$ 71

## Charolais Group Breedplan EBV's

	Birth Weight	200 day growth	400 day growth	600 day growth	Milk
EBV	-1.2	+18	+40	+54	+15
ACC	72%	61%	64%	69%	36%

## Raw Data

Weight	P8	Rib	EMA	IMF %	Scrotal

3



4



<b>5</b>	<b>ROSEDALE MANIPULATOR (P)</b>	Born:	16/08/2016
		Society ID:	MRM167E

SVY PIONEER 402P PED-8416E (D)  
SVY PILGRIM PLD 655S (P)  
HFCC FRENCHKISS 919J PED-9584E

**Sire: ROSEDALE HARRY (AI) (P)**  
DSK WW YABBA DABBA DO Y4 (AI)  
ROSEDALE CANDY C36 (P)  
ROSEDALE CANDY Z34 (P)

PINAY 8552394134 OAFU4134F (H)  
PALGROVE EXPO (AI) (ET) (P)  
PALGROVE ESTELLA 130 (AI) (P)

**Dam: ROSEDALE EMPRESS J167 (P)**  
FERNVALE TRAPPER FENT50E (H)  
ROSEDALE EMPRESS B188 (P)  
ROSEDALE EMPRESS S66 (P)

Cross into profit

**Charolais**  
GROUP BREEDPLAN

Comments																																		
<p><b>Top 5% 200, 400 &amp; 600 Day Growth</b> <b>Top 20% Milk, Domestic &amp; Export Indexes</b></p> <p>A strongly made bull displaying thickness, evenness and growth for age. The combination of Rosedale Harry with a very good young Palgrove Expo daughter has worked very well to produce this great young sire. Great power in polled package.</p>																																		
<p><b>Index \$ Value</b></p> <table border="1" style="width: 100%; border-collapse: collapse;"> <tr> <th style="background-color: #0070C0; color: white;">Domestic (\$)</th> <th style="background-color: #0070C0; color: white;">Export (\$)</th> </tr> <tr> <td style="text-align: center;">+\$ 35</td> <td style="text-align: center;">+\$ 51</td> </tr> </table> <p><b>Charolais Group Breedplan EBV's</b></p> <table border="1" style="width: 100%; border-collapse: collapse;"> <tr> <th></th> <th style="background-color: #0070C0; color: white;">Birth Weight</th> <th style="background-color: #0070C0; color: white;">200 day growth</th> <th style="background-color: #0070C0; color: white;">400 day growth</th> <th style="background-color: #0070C0; color: white;">600 day growth</th> <th style="background-color: #0070C0; color: white;">Milk</th> </tr> <tr> <td style="background-color: #0070C0; color: white;">EBV</td> <td style="text-align: center;">+0.6</td> <td style="text-align: center;">+22</td> <td style="text-align: center;">+41</td> <td style="text-align: center;">+60</td> <td style="text-align: center;">+10</td> </tr> <tr> <td style="background-color: #0070C0; color: white;">ACC</td> <td style="text-align: center;">73%</td> <td style="text-align: center;">63%</td> <td style="text-align: center;">66%</td> <td style="text-align: center;">71%</td> <td style="text-align: center;">42%</td> </tr> </table> <p><b>Raw Data</b></p> <table border="1" style="width: 100%; border-collapse: collapse;"> <tr> <th style="background-color: #0070C0; color: white;">Weight</th> <th style="background-color: #0070C0; color: white;">P8</th> <th style="background-color: #0070C0; color: white;">Rib</th> <th style="background-color: #0070C0; color: white;">EMA</th> <th style="background-color: #0070C0; color: white;">IMF %</th> <th style="background-color: #0070C0; color: white;">Scrotal</th> </tr> <tr> <td style="height: 40px;"></td> <td></td> <td></td> <td></td> <td></td> <td></td> </tr> </table>	Domestic (\$)	Export (\$)	+\$ 35	+\$ 51		Birth Weight	200 day growth	400 day growth	600 day growth	Milk	EBV	+0.6	+22	+41	+60	+10	ACC	73%	63%	66%	71%	42%	Weight	P8	Rib	EMA	IMF %	Scrotal						
Domestic (\$)	Export (\$)																																	
+\$ 35	+\$ 51																																	
	Birth Weight	200 day growth	400 day growth	600 day growth	Milk																													
EBV	+0.6	+22	+41	+60	+10																													
ACC	73%	63%	66%	71%	42%																													
Weight	P8	Rib	EMA	IMF %	Scrotal																													
<p><b>Purchaser</b></p> <div style="border: 1px solid #ccc; height: 20px; width: 100%;"></div>																																		

<b>6</b>	<b>ROSEDALE MUSTANG (AI) (ET) (P)</b>	Born:	29/07/2016
		Society ID:	MRM297E

PALGROVE STAND OUT (AI) PKS229E (H)  
GUNNADOO YUPPY (P) GN1Y131E (P)  
GUNNADOO CINDY R34E (AI) (P)

**Sire: ROSEDALE DEALER (P) (R/F)**  
MINNIE-VALE DEPUTY (P) SGSV78E (P)  
ROSEDALE BUTTERSCOTCH Y47 (P) (R/F)  
ROSEDALE BUTTERSCOTCH V150 (P)

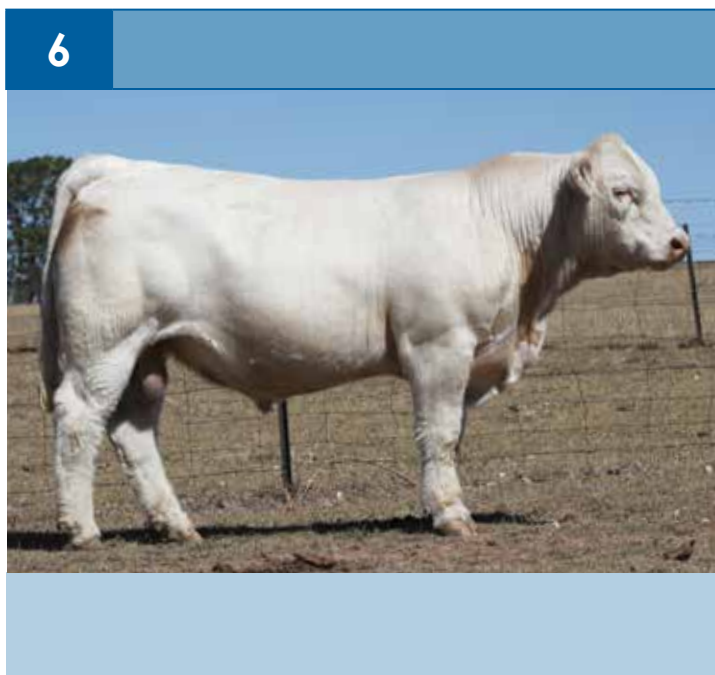
LANG'S ERIC THE RED 3E (P/S)  
HARVIE JAGER 65J PMC228759 (P)  
HARVIE MISS FRANCIS 47F FC234929 (D)

**Dam: ROSEDALE CANDY G304E (AI) (ET) (P) (R/F)**  
PALGROVE JACKPOT (AI) (ET) (P)  
ROSEDALE CANDY Q140 (P)  
ROSEDALE CANDY 10 (P)

Cross into profit

**Charolais**  
GROUP BREEDPLAN

Comments																																		
<p><b>Top 15% Milk, Domestic &amp; Export Indexes</b> <b>Top 20% Birth Weight</b></p> <p>An embryo transfer bull that catches the eye of a lot of people in the Pad-dock. A great thick and soft bull in moderate package. We have retained a full brother and 3 full sisters to Mustang and he is the full brother to Lot 12. Outstanding temperament and carcase qualities from a very strong Dam and Sire line. <a href="#">HOMOZYGOUS POLLED</a></p>																																		
<p><b>Index \$ Value</b></p> <table border="1" style="width: 100%; border-collapse: collapse;"> <tr> <th style="background-color: #0070C0; color: white;">Domestic (\$)</th> <th style="background-color: #0070C0; color: white;">Export (\$)</th> </tr> <tr> <td style="text-align: center;">+\$ 40</td> <td style="text-align: center;">+\$ 56</td> </tr> </table> <p><b>Charolais Group Breedplan EBV's</b></p> <table border="1" style="width: 100%; border-collapse: collapse;"> <tr> <th></th> <th style="background-color: #0070C0; color: white;">Birth Weight</th> <th style="background-color: #0070C0; color: white;">200 day growth</th> <th style="background-color: #0070C0; color: white;">400 day growth</th> <th style="background-color: #0070C0; color: white;">600 day growth</th> <th style="background-color: #0070C0; color: white;">Milk</th> </tr> <tr> <td style="background-color: #0070C0; color: white;">EBV</td> <td style="text-align: center;">-0.6</td> <td style="text-align: center;">+12</td> <td style="text-align: center;">+25</td> <td style="text-align: center;">+37</td> <td style="text-align: center;">+11</td> </tr> <tr> <td style="background-color: #0070C0; color: white;">ACC</td> <td style="text-align: center;">67%</td> <td style="text-align: center;">56%</td> <td style="text-align: center;">58%</td> <td style="text-align: center;">62%</td> <td style="text-align: center;">44%</td> </tr> </table> <p><b>Raw Data</b></p> <table border="1" style="width: 100%; border-collapse: collapse;"> <tr> <th style="background-color: #0070C0; color: white;">Weight</th> <th style="background-color: #0070C0; color: white;">P8</th> <th style="background-color: #0070C0; color: white;">Rib</th> <th style="background-color: #0070C0; color: white;">EMA</th> <th style="background-color: #0070C0; color: white;">IMF %</th> <th style="background-color: #0070C0; color: white;">Scrotal</th> </tr> <tr> <td style="height: 40px;"></td> <td></td> <td></td> <td></td> <td></td> <td></td> </tr> </table>	Domestic (\$)	Export (\$)	+\$ 40	+\$ 56		Birth Weight	200 day growth	400 day growth	600 day growth	Milk	EBV	-0.6	+12	+25	+37	+11	ACC	67%	56%	58%	62%	44%	Weight	P8	Rib	EMA	IMF %	Scrotal						
Domestic (\$)	Export (\$)																																	
+\$ 40	+\$ 56																																	
	Birth Weight	200 day growth	400 day growth	600 day growth	Milk																													
EBV	-0.6	+12	+25	+37	+11																													
ACC	67%	56%	58%	62%	44%																													
Weight	P8	Rib	EMA	IMF %	Scrotal																													
<p><b>Purchaser</b></p> <div style="border: 1px solid #ccc; height: 20px; width: 100%;"></div>																																		





7

## ROSEDALE MAGNATE (P)

Born: 07/09/2016

Society ID: MRM155E

SVY PIONEER 402P PED-8416E (D)  
SVY PILGRIM PLD 655S (P)  
HFCC FRENCHKISS 919J PED-9584E  
**Sire: ROSEDALE HARRY (AI) (P)**  
DSK WW YABBA DABBA DO Y4 (AI)  
ROSEDALE CANDY C36 (P)  
ROSEDALE CANDY Z34 (P)

NOVOTEL 5897127519 OAFS7519F (H)  
PARINGA NOVOTEL A100 (AI) (ET) (P)  
PARINGA FASTRACK Y654 (AI) (ET) (P)  
**Dam: ROSEDALE LUCY G58 (P/S)**  
FERNVALE TRAPPER FENT50E (H)  
ROSEDALE LUCY A210 (P)  
ROSEDALE LUCY V69 (P)



## Comments

**Top 1% 200 Day Growth**  
**Top 5% 400 & 600 Day Growth**  
**Top 15% Export Index**  
**Top 20% Domestic Index**

Magnate is a top of the line Rosedale Harry son with some of the best growth figures in the draft. We admire the length, thickness and balance in this commercially orientated sire.

HOMOZYGOUS POLLED

Purchaser

\$

## Index \$ Value

Domestic (\$)			Export (\$)		
+\$ 34			+\$53		
Charolais Group Breedplan EBV's					
	Birth Weight	200 day growth	400 day growth	600 day growth	Milk
EBV	+0.4	+23	+37	+57	+8
ACC	72%	63%	66%	70%	45%
Raw Data					
Weight	P8	Rib	EMA	IMF %	Scrotal

8

## ROSEDALE MARVIN (P)

Born: 10/08/2016

Society ID: MRM257E

PARINGA NOVOTEL A100 (AI) (ET) (P)  
ROSEDALE FAIRLANE (P)  
ROSEDALE HONOR A118 MRA118E (H)  
**Sire: ROSEDALE KAVIAR (P)**  
EC NO DOUBT 2022 P M685500 (P)  
ROSEDALE NET E58 (AI) (P)  
ROSEDALE NET B195 (P)

PINAY 8552394134 OAFU4134F (H)  
PALGROVE EXPO (AI) (ET) (P)  
PALGROVE ESTELLA 130 (AI) (P)  
**Dam: ROSEDALE HONOR H199 (P)**  
FERNVALE TRAPPER FENT50E (H)  
ROSEDALE HONOR B170 (P)  
ROSEDALE HONOR S75 (P)



## Comments

**Top 1% 200, 400 & 600 Day Growth, Export Index**  
**Top 5% Milk, Domestic Index**  
**Top 20% Birth Weight**

A bigger and growthier type bull with some of the best raw performance numbers in the sale. Marvin still possess softness and fat cover ability making him very desirable in any breeding situation. Terrific soft skin out of a great cow and the first of some very impressive Rosedale Kaviar sons in the sale. Top 1% all growth traits, an absolute curve bender.

Purchaser

\$

## Index \$ Value

Domestic (\$)			Export (\$)		
+\$ 60			+\$92		
Charolais Group Breedplan EBV's					
	Birth Weight	200 day growth	400 day growth	600 day growth	Milk
EBV	-0.7	+24	+48	+80	+14
ACC	72%	60%	64%	69%	38%
Raw Data					
Weight	P8	Rib	EMA	IMF %	Scrotal

7



8



9

## ROSEDALE MAMBO (AI) (P) (R/F)

Born: 29/07/2016

Society ID: MRM64E

SPARROWS DURANGO 585P PED-9528E  
WINN MANS LANZA 610S (P)  
WINN MAN MERIT 036K PED-7547E

Sire: ROSEDALE JUKE (AI) (ET) (P)

FERNVALE TRAPPER FENT50E (H)  
ROSEDALE REBECCA A38 (P)  
ROSEDALE REBECCA V56 (P)

Dam: ROSEDALE AMOUR H291 (AI) (P) (R/F)

MD SENTINAL RULER G1520 M509416 (P/S)  
PARINGA SENTINAL RULER C93E (AI) (ET) (P)  
PARINGA DUKE Z1808 (AI) (ET)  
LHD MR PERFECT Y416 (P)  
ROSEDALE AMOUR W43 R/F (AI) (P)  
ROSEDALE AMOUR U28 (P)



## Comments

## Top 25% 200 Day Growth, Milk, Export Index

A stylish polled Red Bull who has always stood out in the mob. Mambo is evenly balanced and displays even muscling in a red factor polled package. A strong all-rounder. **HOMOZYGOUS POLLED**

Purchaser

\$

## Index \$ Value

Domestic (\$)			Export (\$)		
+\$ 29			+\$ 43		
Charolais Group Breedplan EBV's					
	Birth Weight	200 day growth	400 day growth	600 day growth	Milk
EBV	+0.4	+15	+25	+38	+9
ACC	71%	59%	62%	68%	40%
Raw Data					
Weight	P8	Rib	EMA	IMF %	Scrotal

10

## ROSEDALE MARBLE (P)

Born: 02/09/2016

Society ID: MRM62E

PARINGA SENTINAL RULER C93E (AI) (ET) (P)  
ROSEDALE FRONTLINE (P) (AI) (P)  
ROSEDALE NET C84 (P)

Sire: ROSEDALE JUNO (AI) (ET) (P/S)

FERNVALE TRAPPER FENT50E (H)  
ROSEDALE REBECCA A38 (P)  
ROSEDALE REBECCA V56 (P)

Dam: ROSEDALE REBECCA H115 (P)

NOVOTEL 5897127519 OAF57519F (H)  
PARINGA NOVOTEL A100 (AI) (ET) (P)  
PARINGA FASTRACK Y654 (AI) (ET) (P)  
FERNVALE TRAPPER FENT50E (H)  
ROSEDALE REBECCA A143 (P)  
ROSEDALE REBECCA R137 (AI) (ET) (P)



## Comments

Top 5% 600 Day Growth, Milk  
Top 10% 400 Day Growth  
Top 15% 200 Day Growth  
Top 20% Export Index

Marble is a very, very good deep and thick bull that really catches the eye. So smoothly made with outstanding natural width and even fat cover. This is a bull that will appeal to a lot of cattlemen. **HOMOZYGOUS POLLED**

Purchaser

\$

## Index \$ Value

Domestic (\$)			Export (\$)		
+\$ 31			+\$ 47		
Charolais Group Breedplan EBV's					
	Birth Weight	200 day growth	400 day growth	600 day growth	Milk
EBV	+0.4	+17	+34	+56	+14
ACC	72%	59%	63%	69%	40%
Raw Data					
Weight	P8	Rib	EMA	IMF %	Scrotal

9



10



# 11 ROSEDALE MAGNETO (AI) (P)

Born: 31/07/2016  
Society ID: MRM77E

PALGROVE STAND OUT (AI)  
GUNNADOO YUPPY (P)  
GUNNADOO CINDY R34E (AI) (P)  
**Sire: ROSEDALE DEALER (P) (R/F)**  
MINNIE-VALE DEPUTY (P)  
ROSEDALE BUTTERSCOTCH Y47 (P) (R/F)  
ROSEDALE BUTTERSCOTCH V150 (P)

SVY PIONEER 402P PED-8416E (D)  
SVY PILGRIM PLD 655S (P)  
HFCC FRENCHKISS 919J PED-9584E  
**Dam: ROSEDALE CANDY J25 (AI) (P)**  
DSK WW YABBA DABBA DO Y4 (AI)  
ROSEDALE CANDY C36 (P)  
ROSEDALE CANDY Z34 (P)



## Comments

**Top 10% Birth Weight, Milk**  
**Top 15% Domestic Index**  
**Top 20% Export Index**

Magneto is an outstanding bull with an outcross pedigree. Long, thick and ample depth combined with great fat cover. A strong sirey outlook and extremely well balanced. By the Outcross Sire, Rosedale Dealer.

Purchaser

\$

## Index \$ Value

Domestic (\$)	Export (\$)
+\$ 38	+\$ 51

## Charolais Group Breedplan EBV's

	Birth Weight	200 day growth	400 day growth	600 day growth	Milk
EBV	-1.4	+10	+24	+31	+13
ACC	71%	59%	62%	68%	43%

## Raw Data

Weight	P8	Rib	EMA	IMF %	Scrotal

# 12 ROSEDALE MERLIN (AI) (ET) (P)

Born: 27/07/2016  
Society ID: MRM295E

PALGROVE STAND OUT (AI)  
GUNNADOO YUPPY (P)  
GUNNADOO CINDY R34E (AI) (P)  
**Sire: ROSEDALE DEALER (P) (R/F)**  
MINNIE-VALE DEPUTY (P)  
ROSEDALE BUTTERSCOTCH Y47 (P) (R/F)  
ROSEDALE BUTTERSCOTCH V150 (P)

LANG'S ERIC THE RED 3E (P/S)  
HARVIE JAGER 65J PMC228759 (P)  
HARVIE MISS FRANCIS 47F FC234929 (D)  
**Dam: ROSEDALE CANDY G304E (AI) (ET) (P) (R/F)**  
PALGROVE JACKPOT (AI) (ET) (P)  
ROSEDALE CANDY Q140 (P)  
ROSEDALE CANDY 10 (P)



## Comments

**Top 15% 600 Day Growth**  
**Top 20% 400 Day Growth**  
**Top 25% 200 Day Growth, Milk**

Merlin is a very classy and complete bull that we are very proud of. By Rosedale Dealer out of a great Harvie Jager Donor cow this bull will appeal to stud and commercial breeders alike. Great growth for age, very even and very soft with a little bit of x factor. Full brother retained at Rosedale for stud sire duties. **HOMOZYGOUS POLLED**

Purchaser

\$

## Index \$ Value

Domestic (\$)	Export (\$)
+\$ 19	+\$ 28

## Charolais Group Breedplan EBV's

	Birth Weight	200 day growth	400 day growth	600 day growth	Milk
EBV	+1.6	+15	+31	+46	+9
ACC	67%	56%	58%	62%	44%

## Raw Data

Weight	P8	Rib	EMA	IMF %	Scrotal

11



12





# 13 ROSEDALE MACGUIRE (AI) (P)

Born: 18/08/2016  
Society ID: MRM291E

LT ASSERTION 1277 (P)  
LT BLUEGRASS 4017P M686569 (P)  
LT PEARLS BREEZE 2236 (P)  
**Sire: LT LEDGER 0332 (P)**  
LT RIO BRAVO 3181 P M665507 (P)  
LT BRENDA 6120 PLD PED-6992E  
LT BRENDA'S EASE 3055 PLD PED-9389E

PARINGA NOVOTEL A100 (AI) (ET) (P)  
ROSEDALE FAIRLANE (P)  
ROSEDALE HONOR A118 MRA118E (H)  
**Dam: ROSEDALE CANDY K194 (P)**  
DSK WW YABBA DABBA DO Y4 (AI)  
ROSEDALE CANDY G118E (P)  
ROSEDALE CANDY D138 (P)



## Comments

**Top 5% Birth Weight, Domestic & Export Indexes  
Top 10% Milk**

A bull that really interests us a lot from the renowned AI sire LT Ledger. We love the depth and width of this bull along with his strong doing ability. Once again a terrific nature and a bull that will perform well in a number of scenario's. For a heifers first calf this bull is outstanding. **HOMOZYGOUS POLLED**

Purchaser

\$

## Index \$ Value

Domestic (\$)	Export (\$)
+\$ 50	+\$ 68

## Charolais Group Breedplan EBV's

	Birth Weight	200 day growth	400 day growth	600 day growth	Milk
EBV	-2.6	+14	+27	+33	+13
ACC	74%	65%	68%	72%	46%

## Raw Data

Weight	P8	Rib	EMA	IMF %	Scrotal

# 14 ROSEDALE MONTGOMERY (AI) (P)

Born: 18/08/2016  
Society ID: MRM57E

M6 GRID MAKER 104 PET M633377 (P)  
FINK 8790 OF 2126 GM (P)  
FINKS LADY 2126G1133BUDET (P)  
**Sire: RAILE SOVEREIGN J827 Y064 (P)**  
RAILE 2250 T082 (P)  
RC NICHOLE T082 V175 OAU1509E (H)  
RC NICHOLE 0219 (P)

PARINGA NOVOTEL A100 (AI) (ET) (P)  
ROSEDALE FAIRLANE (P)  
ROSEDALE HONOR A118 MRA118E (H)  
**Dam: ROSEDALE REBECCA K195 (P)**  
ROSEDALE DARWIN (P)  
ROSEDALE REBECCA G123 (P)  
ROSEDALE REBECCA C29 (P)



## Comments

**Top 15% Milk  
Top 20% Birth Weight**

One of the First Raile Sovereign bulls to be sold in Australia. These bulls are thick and stout and have a lot of carcase appeal. A half brother we bred scored a Silver Medal in the 2018 Royal Sydney Show Steer competition. Great nature as well.

Purchaser

\$

## Index \$ Value

Domestic (\$)	Export (\$)
\$ 20	+\$ 23

## Charolais Group Breedplan EBV's

	Birth Weight	200 day growth	400 day growth	600 day growth	Milk
EBV	-0.7	+9	+24	+28	+11
ACC	70%	51%	53%	51%	29%

## Raw Data

Weight	P8	Rib	EMA	IMF %	Scrotal

13



14



# 15 ROSEDALE MENTOR (P)

Born: 13/09/2016  
Society ID: MRM89E

FERNVALE TRAPPER FENT50E (H)  
ROSEDALE DARWIN (P)  
ROSEDALE GRACE A97 (AI) (ET) (P)  
**Sire: ROSEDALE H168 (P)**  
PARINGA NOVOTEL A100 (AI) (ET) (P)  
ROSEDALE BEATRIX D148 (P)  
ROSEDALE BEATRIX Z185 (P)

NOVOTEL 5897127519 OAFS7519F (H)  
PARINGA NOVOTEL A100 (AI) (ET) (P)  
PARINGA FASTRACK Y654 (AI) (ET) (P)  
**Dam: ROSEDALE CANDY D138 (P)**  
EC NEW TREND 6G M 498475 (P)  
ROSEDALE CANDY Z60 (AI)  
ROSEDALE CANDY W23 MRW23E (H)



## Comments

**Top 5% 600 Day Growth, Milk**  
**Top 10% 400 Day Growth, Export Index**  
**Top 15% 200 Day Growth & Milk, Domestic Index**

An attractive bull here with some extremely impressive EBV's and phenotype. Typical of the H168 progeny Mentor has soft smooth skin and is even bodied making him a very appealing option to grassfed producers.

Purchaser

\$

## Index \$ Value

Domestic (\$)	Export (\$)
+\$ 40	+\$ 58

## Charolais Group Breedplan EBV's

	Birth Weight	200 day growth	400 day growth	600 day growth	Milk
EBV	0.0	+17	+35	+54	+15
ACC	74%	64%	68%	72%	47%

## Raw Data

Weight	P8	Rib	EMA	IMF %	Scrotal

# 16 ROSEDALE MASQUERADE (P)

Born: 02/09/2016  
Society ID: MRM104E

FERNVALE TRAPPER FENT50E (H)  
ROSEDALE DARWIN (P)  
ROSEDALE GRACE A97 (AI) (ET) (P)  
**Sire: ROSEDALE H168 (P)**  
PARINGA NOVOTEL A100 (AI) (ET) (P)  
ROSEDALE BEATRIX D148 (P)  
ROSEDALE BEATRIX Z185 (P)

LT SILVER BAR 4216 P M686621 (P) (R/F)  
PALGROVE COACH (AI) (ET) (P)  
PALGROVE FRIESIA 19 (P)  
**Dam: ROSEDALE HONOR F42 (P)**  
MINNIE-VALE DEPUTY (P)  
ROSEDALE HONOR B109 (P)  
ROSEDALE HONOR V129 MRV129E (H)



## Comments

**Top 10% 600 Day Growth, Milk**  
**Top 15% 200 & 400 Day Growth, Export Index**  
A growthy bull combining muscle, bone and doing ability.

Purchaser

\$

## Index \$ Value

Domestic (\$)	Export (\$)
+\$ 38	+\$ 54

## Charolais Group Breedplan EBV's

	Birth Weight	200 day growth	400 day growth	600 day growth	Milk
EBV	+0.5	+17	+32	+48	+12
ACC	74%	63%	66%	71%	44%

## Raw Data

Weight	P8	Rib	EMA	IMF %	Scrotal

15



16



# 17 ROSEDALE MAPLE (P/S)

Born: 04/08/2016  
Society ID: MRM245E

PARINGA NOVOTEL A100 (AI) (ET) (P)  
ROSEDALE FAIRLANE (P)  
ROSEDALE HONOR A118 MRA118E (H)  
**Sire: ROSEDALE KAVIAR (P)**  
EC NO DOUBT 2022 P M685500 (P)  
ROSEDALE NET E58 (AI) (P)  
ROSEDALE NET B195 (P)

FERNVALE TRAPPER FENT50E (H)  
ROSEDALE DARWIN (P)  
ROSEDALE GRACE A97 (AI) (ET) (P)  
**Dam: ROSEDALE RUBY G131E (P)**  
GUNNADOO YUPPY (P)  
ROSEDALE RUBY C77 (P)  
ROSEDALE RUBY X105 (P)



## Comments

**Top 1% Export Index**  
**Top 5% 400 & 600 Day Growth, Milk, Domestic Index**  
**Top 10% 200 Day Growth**

Another great Rosedale Kaviar son with leading growth for age. One of the top performing bulls yet still that ability to soften. We love the length, evenness and balance of this very appealing and growthy sire.

Purchaser

\$

## Index \$ Value

Domestic (\$)			Export (\$)		
+\$ 58			+\$ 85		
Charolais Group Breedplan EBV's					
	Birth Weight	200 day growth	400 day growth	600 day growth	Milk
EBV	+1.3	+18	+37	+58	+14
ACC	73%	61%	65%	70%	39%
Raw Data					
Weight	P8	Rib	EMA	IMF %	Scrotal

# 18 ROSEDALE MASON (P)

Born: 12/08/2016  
Society ID: MRM188E

LT WYOMING WIND 4020 PLD (P)  
HARVIE REDEMPTION 36P MC286641 (P) (R/F)  
HARVIE MS MOLSON 53M (P)  
**Sire: ASCOT GRAND REDEMPTION G52E (AI) (P)**  
BALDRIDGE FASTTRACK 82E M447863 (P)  
GOBONGO JULIETTE B43E (AI) (P)  
GOBONGO JULIETTE Z15E GOZ15E (D)

PALGROVE STAND OUT (AI) PKS229E (H)  
GUNNADOO YUPPY (P) GN1Y131E (P)  
GUNNADOO CINDY R34E (AI) (P)  
**Dam: ROSEDALE REBECCA D31 (P)**  
LHD MR PERFECT Y416 (P)  
ROSEDALE REBECCA R137 (AI) (ET) (P)  
ROSEDALE REBECCA (P)



## Comments

**Top 1% 200, 400 & 600 Day Growth**  
**Top 10% Export Index**  
**Top 15% Milk, Domestic Index**

Mason is a strong and thick bull displaying ample length. His progeny will benefit from early onset weight gains. Terrific growth EBV's, this is a strong bull. **HOMOZYGOUS POLLED**

Purchaser

\$

## Index \$ Value

Domestic (\$)			Export (\$)		
+\$ 41			+\$ 63		
Charolais Group Breedplan EBV's					
	Birth Weight	200 day growth	400 day growth	600 day growth	Milk
EBV	+1.1	+26	+51	+76	+11
ACC	74%	64%	67%	71%	49%
Raw Data					
Weight	P8	Rib	EMA	IMF %	Scrotal

17



18





# 19 ROSEDALE MADDOX (P)

Born: 12/09/2016  
Society ID: MRM81E

PARINGA SENTINAL RULER C93E (AI) (ET) (P)  
ROSEDALE FRONTLINE (P) (AI) (P)  
ROSEDALE NET C84 (P)  
**Sire: ROSEDALE JUNO (AI) (ET) (P/S)**  
FERNVALE TRAPPER FENT50E (H)  
ROSEDALE REBECCA A38 (P)  
ROSEDALE REBECCA V56 (P)

LT BLUEGRASS 4017P M686569 (P)  
LT LEDGER 0332 (P)  
LT BRENDA 6120 PLD PED-6992E  
**Dam: ROSEDALE VIOLET J95 (AI) (P) (R/F)**  
CANOONA CAVALERO (P)  
ROSEDALE VIOLET G92 (P) (R/F)  
ROSEDALE VIOLET V38 (P)



## Comments

**Top 10% 400 & 600 Day Growth, Milk, Export Index**  
**Top 15% 200 Day Growth, Domestic Index**  
**Top 25% Birth Weight**

Maddox is a neatly made young bull that showcases evenness, length of body and natural thickness. Displaying a wonderful topline and strong sirely outlook. Excellent all-round ebv's.

Purchaser

\$

## Index \$ Value

Domestic (\$)			Export (\$)		
+\$ 40			+\$ 58		
Charolais Group Breedplan EBV's					
	Birth Weight	200 day growth	400 day growth	600 day growth	Milk
EBV	-0.3	+17	+34	+51	+13
ACC	59%	57%	61%	66%	35%
Raw Data					
Weight	P8	Rib	EMA	IMF %	Scrotal

# 20 ROSEDALE MANION (P/S)

Born: 29/08/2016  
Society ID: MRM91E

FERNVALE TRAPPER FENT50E (H)  
ROSEDALE DARWIN (P)  
ROSEDALE GRACE A97 (AI) (ET) (P)  
**Sire: ROSEDALE H168 (P)**  
PARINGA NOVOTEL A100 (AI) (ET) (P)  
ROSEDALE BEATRIX D148 (P)  
ROSEDALE BEATRIX Z185 (P)

LT WYOMING WIND 4020 PLD (P)  
DSK WW YABBA DABBA DO Y4 (AI)  
PALGROVE ESTELLA 31 (AI) (ET) (H)  
**Dam: ROSEDALE REBECCA D206 (P)**  
COBRABALD WINSTON (AI) (P)  
ROSEDALE REBECCA A100 (P)  
ROSEDALE REBECCA W50 (AI) (ET) (P)



## Comments

**Top 15% Milk**  
**Top 20% Export Index**  
**Top 25% 600 Day Growth, Domestic Index**

A quality H168 son with exceptional soft skin, loads of volume and a strong topline. Impressive Index's and 600 Day growth.

Purchaser

\$

## Index \$ Value

Domestic (\$)			Export (\$)		
+\$ 32			+\$ 47		
Charolais Group Breedplan EBV's					
	Birth Weight	200 day growth	400 day growth	600 day growth	Milk
EBV	+0.7	+13	+27	+42	+11
ACC	73%	63%	66%	71%	46%
Raw Data					
Weight	P8	Rib	EMA	IMF %	Scrotal

19



20



## 21 ROSEDALE MUSIC MAN (AI) (P)

Born: 06/08/2016  
Society ID: MRM70E

SPARROWS DURANGO 585P PED-9528E  
WINN MANS LANZA 610S (P)  
WINN MAN MERIT 036K PED-7547E  
**Sire: ROSEDALE JUKE (AI) (ET) (P)**  
FERNVALE TRAPPER FENT50E (H)  
ROSEDALE REBECCA A38 (P)  
ROSEDALE REBECCA V56 (P)

PALGROVE WISDOM (AI) (ET) (P)  
CANOONA CAVALERO (P)  
PALGROVE ESTELLA 174 (AI) (P)  
**Dam: ROSEDALE BEATRIX J151 (P)**  
PARINGA NOVOTEL A100 (AI) (ET) (P)  
ROSEDALE BEATRIX F145 (P) (TW)  
ROSEDALE BEATRIX W119 MRW119E (H)



### Comments

**Top 5% Milk**  
**Top 10% Export Index**  
**Top 15% 600 Day Growth, Domestic Index**  
**Top 25% 400 Day Growth**

A sound and smoothly made Rosedale Juke AI son. Music Man is thick from behind and possess that lovely soft skin. **HOMOZYGOUS POLLED**

Purchaser

\$

### Index \$ Value

Domestic (\$)			Export (\$)		
+\$ 41			+\$ 62		
Charolais Group Breedplan EBV's					
	Birth Weight	200 day growth	400 day growth	600 day growth	Milk
EBV	+1.4	+13	+29	+46	+16
ACC	71%	59%	63%	68%	38%
Raw Data					
Weight	P8	Rib	EMA	IMF %	Scrotal

## 22 ROSEDALE MISKELL (P)

Born: 08/09/2016  
Society ID: MRM69E

PARINGA SENTINAL RULER C93E (AI) (ET) (P)  
ROSEDALE FRONTLINE (P) (AI) (P)  
ROSEDALE NET C84 (P)  
**Sire: ROSEDALE JUNO (AI) (ET) (P/S)**  
FERNVALE TRAPPER FENT50E (H)  
ROSEDALE REBECCA A38 (P)  
ROSEDALE REBECCA V56 (P)

HARVIE REDEMPTION 36P MC286641 (P) (R/F)  
ASH-LIN DARE DEVIL (AI) (ET) (P) (R/F)  
GLENLEA ELSA S1E R/F (AI) (H)  
**Dam: ROSEDALE CINDERELLA J10 (P) (R/F)**  
PARINGA NOVOTEL A100 (AI) (ET) (P)  
ROSEDALE CINDERELLA F12 (P)  
ROSEDALE CINDERELLA Z31 (P)



### Comments

**Top 5% 200, 400 & 600 Day Growth**  
**Top 10% Milk**  
**Top 15% Birth Weight, Export Index**  
**Top 20% Domestic Index**

A Soft and squarely made bull with terrific balance. Will continue to develop into a top sire, out of a lovely deep young cow with loads of milk. An outcross bull with plenty to offer backed by excellent birth and growth EBV's.

Purchaser

\$

### Index \$ Value

Domestic (\$)			Export (\$)		
+\$ 35			+\$ 53		
Charolais Group Breedplan EBV's					
	Birth Weight	200 day growth	400 day growth	600 day growth	Milk
EBV	-0.7	+19	+39	+60	+13
ACC	58%	55%	60%	66%	33%
Raw Data					
Weight	P8	Rib	EMA	IMF %	Scrotal

21



22



## 23 ROSEDALE MENTOR (AI) (P)

Born: 27/07/2016  
Society ID: MRM123E

M6 GRID MAKER 104 PET M633377 (P)  
FINK 8790 OF 2126 GM (P)  
FINKS LADY 2126G1133BUDET (P)  
**Sire: RAILE SOVEREIGN J827 Y064 (P)**  
RAILE 2250 T082 (P)  
RC NICHOLE T082 V175 (H)  
RC NICHOLE 0219 (P)

PARINGA NOVOTEL A100 (AI) (ET) (P)  
ROSEDALE FAIRLANE (P) MRF8E (P)  
ROSEDALE HONOR A118 MRA118E (H)  
**Dam: ROSEDALE BUTTERSCOTCH K23 (P)**  
ROSEDALE ZINGER (P) MRZ18E (P)  
ROSEDALE BUTTERSCOTCH E147 (P)  
ROSEDALE BUTTERSCOTCH X141 (P)



### Comments

**Top 5% Birth Weight**  
**Top 15% Milk**

A very stout carcass focussed bull with commercial appeal. One of the very first Sovereign calves to be sold in Australia, bullet proof temperament. A quality heifers first calf. **HOMOZYGOUS POLLED**

Purchaser

\$

### Index \$ Value

Domestic (\$)			Export (\$)		
+\$ 30			+\$ 36		
Charolais Group Breedplan EBV's					
	Birth Weight	200 day growth	400 day growth	600 day growth	Milk
EBV	-2.2	+7	+18	+21	+11
ACC	71%	59%	62%	68%	31%
Raw Data					
Weight	P8	Rib	EMA	IMF %	Scrotal

## 24 ROSEDALE MENACE (AI) (P)

Born: 02/08/2016  
Society ID: MRM126E

LT ASSERTION 1277 (P)  
LT BLUEGRASS 4017P M686569 (P)  
LT PEARLS BREEZE 2236 (P)  
**Sire: LT LEDGER 0332 (P)**  
LT RIO BRAVO 3181 P M665507 (P)  
LT BRENDA 6120 PLD PED-6992E  
LT BRENDA'S EASE 3055 PLD PED-9389E

PARINGA NOVOTEL A100 (AI) (ET) (P)  
ROSEDALE FAIRLANE (P)  
ROSEDALE HONOR A118 MRA118E (H)  
**Dam: ROSEDALE BEATRIX K25**  
REIDS ASSASIN (P) RCSA21E (P)  
ROSEDALE BEATRIX E244 (P)  
ROSEDALE BEATRIX Z26 (P)



### Comments

**Top 1% Birth Weight**  
**Top 5% Domestic & Export Indexes**  
**Top 15% Milk**

A very impressive heifer bull with big time appeal. For those chasing lower birthweights and calving ease yet solid growth Menace could be the one. This is one quality bull who should not be overlooked. One of the softest bulls in the sale.

Purchaser

\$

### Index \$ Value

Domestic (\$)			Export (\$)		
+\$ 54			+\$ 71		
Charolais Group Breedplan EBV's					
	Birth Weight	200 day growth	400 day growth	600 day growth	Milk
EBV	-3.4	+11	+23	+24	+11
ACC	73%	65%	67%	72%	46%
Raw Data					
Weight	P8	Rib	EMA	IMF %	Scrotal

23



24





## 25 ROSEDALE MANTRA (AI) (P)

Born: 31/07/2016  
Society ID: MRM58E

SPARROWS DURANGO 585P PED-9528E  
WINN MANS LANZA 610S (P)  
WINN MAN MERIT 036K PED-7547E  
**Sire: ROSEDALE JUKE (AI) (ET) (P)**  
FERNVALE TRAPPER FENT50E (H)  
ROSEDALE REBECCA A38 (P)  
ROSEDALE REBECCA V56 (P)

MINNIE-VALE DEPUTY (P)  
ROSEDALE ZINGER (P)  
ROSEDALE NICKY X7 (AI) (P)  
**Dam: ROSEDALE RUBY E170 (P)**  
FERNVALE TRAPPER FENT50E (H)  
ROSEDALE RUBY Z98 (P)  
ROSEDALE RUBY Q22 (P)



### Comments

**Top 15% 600 Day Growth**  
**Top 20% Export Index**  
**Top 25% 400 Day Growth, Milk**

A long bodied bull with a terrific topline. Strong polled outlook and wide from behind. An accelerated growth curve and soundly put together,  
**HOMOZYGOUS POLLED**

Purchaser

\$

### Index \$ Value

Domestic (\$)			Export (\$)		
+\$ 31			+\$ 47		
Charolais Group Breedplan EBV's					
	Birth Weight	200 day growth	400 day growth	600 day growth	Milk
EBV	0.0	+13	+29	+45	+9
ACC	72%	61%	63%	69%	46%
Raw Data					
Weight	P8	Rib	EMA	IMF %	Scrotal

## 26 ROSEDALE MELBOURNE (P)

Born: 07/08/2016  
Society ID: MRM168E

SVY PIONEER 402P PED-8416E (D)  
SVY PILGRIM PLD 655S (P)  
HFCC FRENCHKISS 919J PED-9584E  
**Sire: ROSEDALE HARRY (AI) (P)**  
DSK WW YABBA DABBA DO Y4 (AI)  
ROSEDALE CANDY C36 (P)  
ROSEDALE CANDY Z34 (P)

PINAY 8552394134 OAFU4134F (H)  
PALGROVE EXPO (AI) (ET) (P)  
PALGROVE ESTELLA 130 (AI) (P)  
**Dam: ROSEDALE HUSSY J172 (P)**  
DSK WW YABBA DABBA DO Y4 (AI)  
ROSEDALE HUSSY C46 (P)  
ROSEDALE HUSSY Z179 (P)



### Comments

**Top 25% 200 Day Growth**

A classy thick and even bull, once again Harry working well with the Expo daughters. Good even growth numbers in a nice looking package. Melbourne's calves will have shape and substance.

Purchaser

\$

### Index \$ Value

Domestic (\$)			Export (\$)		
+\$ 18			+\$ 26		
Charolais Group Breedplan EBV's					
	Birth Weight	200 day growth	400 day growth	600 day growth	Milk
EBV	+0.1	+15	+23	+32	+8
ACC	73%	63%	67%	71%	42%
Raw Data					
Weight	P8	Rib	EMA	IMF %	Scrotal

25



26



27

## ROSEDALE MELEE (P)

Born: 15/08/2016

Society ID: MRM116E

FERNVALE TRAPPER FENT50E (H)  
ROSEDALE DARWIN (P)  
ROSEDALE GRACE A97 (AI) (ET) (P)  
**Sire: ROSEDALE H168 (P)**  
PARINGA NOVOTEL A100 (AI) (ET) (P)  
ROSEDALE BEATRIX D148 (P)  
ROSEDALE BEATRIX Z185 (P)

PALGROVE WISDOM (AI) (ET) (P)  
CANOONA CAVALERO (P)  
PALGROVE ESTELLA 174 (AI) (P)  
**Dam: ROSEDALE VIOLET G92 (P) (R/F)**  
ROSEDALE SNAG (AI) (P)  
ROSEDALE VIOLET V38 (P)  
ROSEDALE VIOLET S149 (P)



## Comments

**Top 15% 600 Day Growth, Domestic & Export Indexes**  
**Top 20% 400 Day Growth**  
**Top 25% Birth Weight, 200 Day Growth**

There is a lot to like about this high quality H168 son. Thick and square yet long and stylish. A well natured bull who would be suitable for many different uses. A full brother sold to Noller Charolais Stud at last years sale.  
**HOMOZYGOUS POLLED**

Purchaser

\$

## Index \$ Value

Domestic (\$)			Export (\$)		
+\$ 40			+\$ 57		
Charolais Group Breedplan EBV's					
	Birth Weight	200 day growth	400 day growth	600 day growth	Milk
EBV	-0.3	+15	+31	+46	+14
ACC	73%	63%	67%	71%	44%
Raw Data					
Weight	P8	Rib	EMA	IMF %	Scrotal

28

## ROSEDALE MANTRA (AI) (P)

Born: 02/08/2016

Society ID: MRM63E

SPARROWS DURANGO 585P PED-9528E  
WINN MANS LANZA 610S (P)  
WINN MAN MERIT 036K PED-7547E  
**Sire: ROSEDALE JUKE (AI) (ET) (P)**  
FERNVALE TRAPPER FENT50E (H)  
ROSEDALE REBECCA A38 (P)  
ROSEDALE REBECCA V56 (P)

NOVOTEL 5897127519 OAFS7519F (H)  
PARINGA NOVOTEL A100 (AI) (ET) (P)  
PARINGA FASTRACK Y654 (AI) (ET) (P)  
**Dam: ROSEDALE RUBY H287 (P)**  
ROSEDALE SELECTOR (AI) (P)  
ROSEDALE RUBY X14 (P)  
ROSEDALE RUBY Q59 (AI) (ET) (P)



## Comments

**Top 5% Milk**  
**Top 10% 600 Day Growth**  
**Top 15% Export Index**  
**Top 20% Birth Weight, 400 Day Growth, Domestic Index**  
**Top 25% 200 Day**

A solid bull possessing a phenomenal birth to 600 day spread. We love the commercial appeal of this bull showcasing thickness and balance.

Purchaser

\$

## Index \$ Value

Domestic (\$)			Export (\$)		
+\$ 36			+\$ 55		
Charolais Group Breedplan EBV's					
	Birth Weight	200 day growth	400 day growth	600 day growth	Milk
EBV	-0.8	+15	+30	+48	+14
ACC	71%	60%	62%	69%	41%
Raw Data					
Weight	P8	Rib	EMA	IMF %	Scrotal

27



28



## 29 ROSEDALE MERCHANDISE (P)

Born: 13/08/2016  
Society ID: MRM141E

LT WYOMING WIND 4020 PLD (P)  
HARVIE REDEMPTION 36P MC286641 (P) (R/F)  
HARVIE MS MOLSON 53M (P) PED-6280E (P)  
**Sire: ASCOT GRAND REDEMPTION G52E (AI) (P)**  
BALDRIDGE FASTTRACK 82E M447863 (P)  
GOBONGO JULIETTE B43E (AI) (P)  
GOBONGO JULIETTE Z15E GOZ15E (D)

NOVOTEL 5897127519 OAF57519F (H)  
PARINGA NOVOTEL A100 (AI) (ET) (P)  
PARINGA FASTTRACK Y654 (AI) (ET) (P)  
**Dam: ROSEDALE CADANCE E169 (P)**  
LT WYOMING WIND 4020 PLD (P)  
ROSEDALE CADANCE A76 (AI) (P)  
ROSEDALE CADANCE W47 (AI) (P)



### Comments

**Top 1% 200 Day Growth**  
**Top 5% 400 Day Growth**  
**Top 10% 600 Day Growth**

A strapping growthy bull who possesses some fantastic growth EBV's. Structurally very sound and free moving. This is another growth bull to keep an eye on.

Purchaser

\$

### Index \$ Value

Domestic (\$)	Export (\$)
+\$ 21	+\$ 32

### Charolais Group Breedplan EBV's

	Birth Weight	200 day growth	400 day growth	600 day growth	Milk
EBV	+1.0	+23	+37	+50	+7
ACC	74%	64%	67%	72%	49%

### Raw Data

Weight	P8	Rib	EMA	IMF %	Scrotal

## 30 ROSEDALE MITRE (P)

Born: 17/08/2016  
Society ID: MRM228E

PARINGA NOVOTEL A100 (AI) (ET) (P)  
ROSEDALE FAIRLANE (P)  
ROSEDALE HONOR A118 MRA118E (H)  
**Sire: ROSEDALE KAVIAR (P)**  
EC NO DOUBT 2022 P M685500 (P)  
ROSEDALE NET E58 (AI) (P)  
ROSEDALE NET B195 (P)

MINNIE-VALE DEPUTY (P)  
ROSEDALE ZINGER (P)  
ROSEDALE NICKY X7 (AI) (P)  
**Dam: ROSEDALE BOBBIN C23 (P)**  
MINNIE-VALE DEPUTY (P)  
ROSEDALE BOBBIN Z106 (P)  
ROSEDALE BOBBIN V109 (P)



### Comments

**Top 5% 200 & 600 Day Growth**  
**Top 10% 400 Day Growth, Milk**  
**Top 15% Export Index**  
**Top 20% Domestic Index**  
**Top 25% Birth Weight**

Another fantastic Rosedale Kaviar son who is breeding just as consistently as his father (Rosedale Fairlane). Mitre is one of the lead bulls in his mob for growth combined with exceptional raw carcass scans. **HOMOZYGOUS POLLED**

Purchaser

\$

### Index \$ Value

Domestic (\$)	Export (\$)
+\$ 36	+\$ 53

### Charolais Group Breedplan EBV's

	Birth Weight	200 day growth	400 day growth	600 day growth	Milk
EBV	-0.4	+19	+35	+54	+12
ACC	73%	62%	65%	69%	44%

### Raw Data

Weight	P8	Rib	EMA	IMF %	Scrotal

29



30





# 31 ROSEDALE MUNSY (P)

Born: 28/08/2016  
Society ID: MRM231E

PARINGA NOVOTEL A100 (AI) (ET) (P)  
ROSEDALE FAIRLANE (P)  
ROSEDALE HONOR A118 MRA118E (H)  
**Sire: ROSEDALE KAVIAR (P)**  
EC NO DOUBT 2022 P M685500 (P)  
ROSEDALE NET E58 (AI) (P)  
ROSEDALE NET B195 (P)

LT WYOMING WIND 4020 PLD (P)  
DSK WW YABBA DABBA DO Y4 (AI)  
PALGROVE ESTELLA 31 (AI) (ET) PKN230E (H)  
**Dam: ROSEDALE CONFIDENCE E204 (P)**  
ROSEDALE WILLIE (P)  
ROSEDALE CONFIDENCE B177 (P) (R/F)  
ROSEDALE CONFIDENCE W33 R/F (P)



## Comments

**Top 5% 600 Day Growth, Export Index**  
**Top 10% 200, 400 Day Growth, Milk, Domestic Index**  
**Top 25% Birth Weight**

A brilliant bull with a lot to like about him. Yet again quality from Rosedale Kaviar. A true reflection of a modern day charolais bull. Polled, sensible birthweight and great growth in combination with softness. **HOMOZYGOUS POLLED**

Purchaser

\$

## Index \$ Value

Domestic (\$)			Export (\$)		
+\$ 45			+\$ 66		
Charolais Group Breedplan EBV's					
	Birth Weight	200 day growth	400 day growth	600 day growth	Milk
EBV	-0.4	+18	+36	+54	+13
ACC	72%	60%	63%	68%	39%
Raw Data					
Weight	P8	Rib	EMA	IMF %	Scrotal

# 32 ROSEDALE MATTHEW (P)

Born: 28/08/2016  
Society ID: MRM184E

LT WYOMING WIND 4020 PLD (P)  
HARVIE REDEMPTION 36P MC286641 (P) (R/F)  
HARVIE MS MOLSON 53M (P)  
**Sire: ASCOT GRAND REDEMPTION G52E (AI) (P)**  
BALDRIDGE FASTTRACK 82E M447863 (P)  
GOBONGO JULIETTE B43E (AI) (P)  
GOBONGO JULIETTE Z15E GOZ15E (D)

FERNVALE TRAPPER  
ROSEDALE XPAT (P)  
ROSEDALE DAFFODIL 5 (P)  
**Dam: ROSEDALE KELLY A231E (P)**  
FERNVALE TRAPPER  
ROSEDALE KELLY X17  
ROSEDALE KELLY U108 (P)



## Comments

**Top 10% Birth Weight**  
**Top 10% 200, 400 Day Growth**  
**Top 20% Milk**  
**Top 15% 600 Day Growth**

A soft and nicely natured stylish bull. Good growth and excellent fat cover. A commercial bull with lots of appeal, his mother was in production until we retired her at 12 years old.

Purchaser

\$

## Index \$ Value

Domestic (\$)			Export (\$)		
+\$ 27			+\$ 35		
Charolais Group Breedplan EBV's					
	Birth Weight	200 day growth	400 day growth	600 day growth	Milk
EBV	+0.0	+19	+34	+47	+10
ACC	74%	64%	66%	71%	52%
Raw Data					
Weight	P8	Rib	EMA	IMF %	Scrotal

31



32



33

## ROSEDALE MILESTONE (AI) (P) (R/F)

Born: 27/07/2016

Society ID: MRM133E

PALGROVE STAND OUT (AI) PKS229E (H)  
 GUNNADOO YUPPY (P) GN1Y131E (P)  
 GUNNADOO CINDY R34E (AI) (P)

Sire: ROSEDALE DEALER (P) (R/F)

MINNIE-VALE DEPUTY (P)  
 ROSEDALE BUTTERSCOTCH Y47 (P) (R/F)  
 ROSEDALE BUTTERSCOTCH V150 (P)

Dam: ROSEDALE HIGHNESS K12 (AI) (ET) (P)

SVY FREEDOM PLD 307N PMC280878 (P)  
 GERRARD MONTEZUMA 6T (P)  
 GERRARD ROXANNE 18P PED-4620E  
 EC NEW TREND 6G M 498475 (P)  
 ROSEDALE HIGHNESS X27 (AI) (P)  
 ROSEDALE HIGHNESS U134 (P) (TW)



## Comments

## Top 25% Milk

A softer made red factor bull just starting to hit his straps. Neat bull reared by a great young heifer.

HOMOZYGOUS POLLED

Purchaser

\$

## Index \$ Value

Domestic (\$)

Export (\$)

+\$ 17

+\$ 22

## Charolais Group Breedplan EBV's

	Birth Weight	200 day growth	400 day growth	600 day growth	Milk
EBV	-0.1	+7	+15	+17	+9
ACC	69%	57%	59%	67%	41%

## Raw Data

Weight	P8	Rib	EMA	IMF %	Scrotal

34

## ROSEDALE MANDATORY (P)

Born: 04/09/2016

Society ID: MRM160E

SVY PIONEER 402P PED-8416E (D)  
 SVY PILGRIM PLD 655S (P)  
 HFCC FRENCHKISS 919J PED-9584E

Sire: ROSEDALE HARRY (AI) (P)

DSK WW YABBA DABBA DO Y4 (AI)  
 ROSEDALE CANDY C36 (P)  
 ROSEDALE CANDY Z34 (P)

Dam: ROSEDALE RUBY H265 (P)

LT EASY BLEND 5125 PLD (P)  
 ROSEDALE FIRST CLASS (AI) (P)  
 ROSEDALE CINDERELLA D6 (P)  
 REIDS ASSASIN (P) RCSA21E (P)  
 ROSEDALE RUBY E157 (P)  
 ROSEDALE RUBY B31 (P)



## Comments

## Top 20% Birth Weight

## Top 25% 200 Day Growth

Another impressionable young Harry Sire with appeal. Low in the birth-weight with a great 200 Day growth spread. Squarely made and high class. HOMOZYGOUS POLLED

Purchaser

\$

## Index \$ Value

Domestic (\$)

Export (\$)

+\$ 30

+\$ 41

## Charolais Group Breedplan EBV's

	Birth Weight	200 day growth	400 day growth	600 day growth	Milk
EBV	-0.6	+15	+27	+32	+7
ACC	73%	63%	67%	71%	39%

## Raw Data

Weight	P8	Rib	EMA	IMF %	Scrotal

33



34



# 35 ROSEDALE MACCOY (P)

Born: 21/11/2016  
Society ID: MRM281E

SVY PIONEER 402P PED-8416E (D)  
SVY PILGRIM PLD 655S (P)  
HFCC FRENCHKISS 919J PED-9584E  
**Sire: ROSEDALE HARRY (AI) (P)**  
DSK WW YABBA DABBA DO Y4 (AI)  
ROSEDALE CANDY C36 (P)  
ROSEDALE CANDY Z34 (P)

NOVOTEL 5897127519 OAFS7519F (H)  
PARINGA NOVOTEL A100 (AI) (ET) (P)  
PARINGA FASTRACK Y654 (AI) (ET) (P)  
**Dam: ROSEDALE EMPRESS G27 (P)**  
SEAWELL OFFSHORE 0084446 OAET5813F (H)  
ROSEDALE EMPRESS W85 (AI) (ET) (P)  
ROSEDALE EMPRESS S66 (P)



## Comments

**Top 10% 200 Day Growth**  
**Top 20% Milk**

A reliable thickset bull who is the result of a Rosedale Harry working well with a Paringa Novotel daughter. This bull contains class, softness and width and is well natured to boot. **HOMOZYGOUS POLLED**

Purchaser

\$

## Index \$ Value

Domestic (\$)	Export (\$)
+\$ 21	+\$ 30

## Charolais Group Breedplan EBV's

	Birth Weight	200 day growth	400 day growth	600 day growth	Milk
EBV	-0.1	+18	+27	+37	+10
ACC	72%	57%	59%	59%	46%

## Raw Data

Weight	P8	Rib	EMA	IMF %	Scrotal

# 36 ROSEDALE MONTREAL (P)

Born: 01/10/2016  
Society ID: MRM173E

SVY PIONEER 402P PED-8416E (D)  
SVY PILGRIM PLD 655S (P)  
HFCC FRENCHKISS 919J PED-9584E  
**Sire: ROSEDALE HARRY (AI) (P)**  
DSK WW YABBA DABBA DO Y4 (AI)  
ROSEDALE CANDY C36 (P)  
ROSEDALE CANDY Z34 (P)

FERNVALE TRAPPER FENT50E (H)  
ROSEDALE DARWIN (P)  
ROSEDALE GRACE A97 (AI) (ET) (P)  
**Dam: ROSEDALE HONOR J254 (P)**  
MINNIE-VALE DEPUTY (P)  
ROSEDALE HONOR Z177 (P)  
ROSEDALE HONOR R157 (P)



## Comments

**Top 5% 200 & 600 Day Growth**  
**Top 10% 400 Day Growth**  
**Top 20% Domestic & Export Indexes**

A good Harry bull with a terrific data set. A bull to really accelerate growth patterns and maintain fat cover. Will produce some good looking and smooth weaners. **HOMOZYGOUS POLLED**

Purchaser

\$

## Index \$ Value

Domestic (\$)	Export (\$)
+\$ 34	+\$ 51

## Charolais Group Breedplan EBV's

	Birth Weight	200 day growth	400 day growth	600 day growth	Milk
EBV	+0.3	+20	+35	+49	+8
ACC	73%	63%	66%	71%	42%

## Raw Data

Weight	P8	Rib	EMA	IMF %	Scrotal

# 37 ROSEDALE MICHAEL (P)

Born: 21/08/2016  
Society ID: MRM182E

LT WYOMING WIND 4020 PLD (P)  
HARVIE REDEMPTION 36P MC286641 (P) (R/F)  
HARVIE MS MOLSON 53M (P)  
**Sire: ASCOT GRAND REDEMPTION G52E (AI) (P)**  
BALDRIDGE FASTRACK 82E M447863 (P)  
GOBONGO JULIETTE B43E (AI) (P)  
GOBONGO JULIETTE Z15E GOZ15E (D)

LT WYOMING WIND 4020 PLD (P)  
DSK WW YABBA DABBA DO Y4 (AI)  
PALGROVE ESTELLA 31 (AI) (ET)  
**Dam: ROSEDALE HUSSY E167 (P)**  
MINNIE-VALE DEPUTY (P)  
ROSEDALE HUSSY B126 (P)  
ROSEDALE HUSSY X10 (TW)



## Comments

**Top 10% 200 Day Growth**  
**Top 15% 400 & 600 Day Growth Export Index**  
**Top 20% Milk, Domestic Index**

A sound and safe top bull with amazing growth EBV's. A great bull to be used on almost any cows for a great result. Will certainly increase weight gain.

Purchaser

\$

## Index \$ Value

Domestic (\$)	Export (\$)
+\$ 36	+\$ 54

## Charolais Group Breedplan EBV's

	Birth Weight	200 day growth	400 day growth	600 day growth	Milk
EBV	-0.1	+18	+33	+45	+10
ACC	74%	64%	67%	72%	48%

## Raw Data

Weight	P8	Rib	EMA	IMF %	Scrotal



## 38 ROSEDALE MANHATTEN (P/S)

Born: 18/08/2016  
Society ID: MRM239E

PARINGA NOVOTEL A100 (AI) (ET) (P)  
ROSEDALE FAIRLANE (P)  
ROSEDALE HONOR A118 MRA118E (H)  
**Sire: ROSEDALE KAVIAR (P)**  
EC NO DOUBT 2022 P M685500 (P)  
ROSEDALE NET E58 (AI) (P)  
ROSEDALE NET B195 (P)

LHD CIGAR E46 (P)  
ASHWOOD PARK BACARDI (AI) (ET) (P)  
ASHWOOD PARK MISS UNIVERSE (AI) (P)  
**Dam: ROSEDALE HONOR F84 (P)**  
ROSEDALE SNAG (AI) (P)  
ROSEDALE HONOR V51 (P)  
ROSEDALE HONOR S75 (P)



### Comments

**Top 5% 200 Day Growth**  
**Top 10% Milk, Domestic & Export Indexes**  
**Top 15% Birth Weight, 400 & 600 Day Growth**

Manhattan is a growthy and consistent Kaviar son oozing with thickness and fat cover with plenty of grunt. A great set of figures and a bull we really like.

Purchaser

\$

### Index \$ Value

Domestic (\$)			Export (\$)		
+\$ 44			+\$ 63		
Charolais Group Breedplan EBV's					
	Birth Weight	200 day growth	400 day growth	600 day growth	Milk
EBV	-1.2	+19	+32	+46	+12
ACC	73%	61%	64%	69%	40%
Raw Data					
Weight	P8	Rib	EMA	IMF %	Scrotal

## 39 ROSEDALE MUSCAT (P)

Born: 28/09/2016  
Society ID: MRM210E

LT WYOMING WIND 4020 PLD (P)  
HARVIE REDEMPTION 36P MC286641 (P) (R/F)  
HARVIE MS MOLSON 53M (P)  
**Sire: ASCOT GRAND REDEMPTION G52E (AI) (P)**  
BALDRIDGE FASTTRACK 82E M447863 (P)  
GOBONGO JULIETTE B43E (AI) (P)  
GOBONGO JULIETTE Z15E GOZ15E (D)

NOVOTEL 5897127519 OAFS7519F (H)  
PARINGA NOVOTEL A100 (AI) (ET) (P)  
PARINGA FASTTRACK Y654 (AI) (ET) (P)  
**Dam: ROSEDALE CANDY F191 (P)**  
MINNIE-VALE DEPUTY (P)  
ROSEDALE CANDY Z74 (P)  
ROSEDALE CANDY V143 (AI) (P)



### Comments

**Top 5% 200, 400 & 600 Day Growth, Export Index**  
**Top 10% Milk, Domestic Index**  
**Top 15% Birth Weight**

A big bull with big growth. Curve bending EBV's and a solid foundation. This is a quality bull with a lot going for him.

Purchaser

\$

### Index \$ Value

Domestic (\$)			Export (\$)		
+\$ 47			+\$ 67		
Charolais Group Breedplan EBV's					
	Birth Weight	200 day growth	400 day growth	600 day growth	Milk
EBV	-1.0	+21	+40	+54	+13
ACC	73%	64%	67%	71%	49%
Raw Data					
Weight	P8	Rib	EMA	IMF %	Scrotal

38



34



# 40 ROSEDALE MALACHI (P)

Born: 14/08/2016  
Society ID: MRM260E

PARINGA NOVOTEL A100 (AI) (ET) (P)  
ROSEDALE FAIRLANE (P)  
ROSEDALE HONOR A118 MRA118E (H)  
**Sire: ROSEDALE KAVIAR (P)**  
EC NO DOUBT 2022 P M685500 (P)  
ROSEDALE NET E58 (AI) (P)  
ROSEDALE NET B195 (P)

PALGROVE WISDOM (AI) (ET) (P)  
CANOONA CAVALERO (P)  
PALGROVE ESTELLA 174 (AI) (P)  
**Dam: ROSEDALE NET H52 (P)**  
FERNVALE TRAPPER FENT50E (H)  
ROSEDALE NET A220 MRA220E (H)  
ROSEDALE NET R110 (P)



## Comments

**Top 5% Domestic & Export Indexes**  
**Top 10% Birth Weight, Milk**  
**Top 20% 400 Day Growth**  
**Top 25% 200 & 600 Day Growth**

We are so impressed by the growth and softness of the Kaviar sons. Malachi - a great body type and loads of commercial appeal. Once again curve bending numbers - the complete polled package. **HOMOZYGOUS POLLED**

Purchaser

\$

## Index \$ Value

Domestic (\$)			Export (\$)		
+\$ 50			+\$ 70		
Charolais Group Breedplan EBV's					
	Birth Weight	200 day growth	400 day growth	600 day growth	Milk
EBV	-1.9	+15	+30	+42	+13
ACC	73%	61%	65%	69%	37%
Raw Data					
Weight	P8	Rib	EMA	IMF %	Scrotal

# 41 ROSEDALE MILE HIGH (AI) (P)

Born: 31/07/2016  
Society ID: MRM131E

LT WESTERN EDGE 4057 PLD M686616 (P)  
LT STAGECOACH 8068 PLD (P)  
LT LADY MACBETH 2131 PLD PED-6197E  
**Sire: LT VENTURE 3198 (P)**  
LT EASY PRO 1158 PLD (P)  
LT BALLET 9219 (P)  
LT BALLET 6233 OAU6957E (H)

PARINGA NOVOTEL A100 (AI) (ET) (P)  
ROSEDALE FAIRLANE (P)  
ROSEDALE HONOR A118 MRA118E (H)  
**Dam: ROSEDALE GRACE K36 (P)**  
WCR SIR DUKE 835 M 286251 (P)  
ROSEDALE GRACE A97 (AI) (ET) (P)  
ROSEDALE GRACE T9 (P)



## Comments

**Top 1% Milk**  
**Top 5% Birth Weight, Domestic Index**  
**Top 10% Export Index**

Make sure you run your eye over this bull. Another great Lt Venture son with lots on offer, great weight, great scans and a great type. A lower birth-weight bull that is hard to beat.

Purchaser

\$

## Index \$ Value

Domestic (\$)			Export (\$)		
+\$ 50			+\$ 66		
Charolais Group Breedplan EBV's					
	Birth Weight	200 day growth	400 day growth	600 day growth	Milk
EBV	-2.8	+11	+27	+32	+18
ACC	72%	62%	65%	70%	36%
Raw Data					
Weight	P8	Rib	EMA	IMF %	Scrotal

# 42 ROSEDALE MICHAEL (P)

Born: 09/10/2016  
Society ID: MRM252E

PARINGA NOVOTEL A100 (AI) (ET) (P)  
ROSEDALE FAIRLANE (P)  
ROSEDALE HONOR A118 MRA118E (H)  
**Sire: ROSEDALE KAVIAR (P)**  
EC NO DOUBT 2022 P M685500 (P)  
ROSEDALE NET E58 (AI) (P)  
ROSEDALE NET B195 (P)

HFCC PLD EVOLUTION 5L PED-6316E (H)  
SVY FREEDOM PLD 307N PMC280878 (P)  
SVY PURRFECT 184L PED-3051E (H)  
**Dam: ROSEDALE DAFFODIL G35 (AI) (P)**  
DSK WW YABBA DABBA DO Y4 (AI)  
ROSEDALE DAFFODIL E5 (P)  
ROSEDALE DAFFODIL 5 (AI) (P)



## Comments

**Top 10% Export Index**  
**Top 15% 200, 400 & 600 Day Growth, Milk, Domestic Index**  
**Top 20% Birth Weight**

Excellent all-rounder with low birth and good figures. Michael is a versatile bull who will perform under any circumstances. **HOMOZYGOUS POLLED**

Purchaser

\$

## Index \$ Value

Domestic (\$)			Export (\$)		
+\$ 40			+\$ 59		
Charolais Group Breedplan EBV's					
	Birth Weight	200 day growth	400 day growth	600 day growth	Milk
EBV	-0.7	+17	+33	+46	+11
ACC	72%	61%	65%	69%	39%
Raw Data					
Weight	P8	Rib	EMA	IMF %	Scrotal

## 43 ROSEDALE MUNCH (P/S)

Born: 05/08/2016  
Society ID: MRM234E

PARINGA NOVOTEL A100 (AI) (ET) (P)  
ROSEDALE FAIRLANE (P)  
ROSEDALE HONOR A118 MRA118E (H)  
**Sire: ROSEDALE KAVIAR (P)**  
EC NO DOUBT 2022 P M685500 (P)  
ROSEDALE NET E58 (AI) (P)  
ROSEDALE NET B195 (P)

LT SILVER BAR 4216 P M686621 (P) (R/F)  
PALGROVE COACH (AI) (ET) (P)  
PALGROVE FRIESIA 19 (P)  
**Dam: ROSEDALE REBECCA F54 (P)**  
MINNIE-VALE DEPUTY (P)  
ROSEDALE REBECCA B44 (P)  
ROSEDALE REBECCA V56 (P)



### Comments

**Top 10% Birth Weight, Domestic & Export Indexes  
Top 15% Milk**

Munch is definitely one of the standout bulls in his mob. Has really hit his straps and has turned into a great bull with length, thickness and softness. A bull you can't go wrong with, so evenly balanced.

Purchaser

\$

### Index \$ Value

Domestic (\$)			Export (\$)		
+\$ 44			+\$ 62		
Charolais Group Breedplan EBV's					
	Birth Weight	200 day growth	400 day growth	600 day growth	Milk
EBV	-1.6	+14	+27	+38	+11
ACC	73%	61%	64%	69%	39%
Raw Data					
Weight	P8	Rib	EMA	IMF %	Scrotal

## 44 ROSEDALE MILKY BAR (P)

Born: 28/08/2016  
Society ID: MRM227E

PARINGA NOVOTEL A100 (AI) (ET) (P)  
ROSEDALE FAIRLANE (P)  
ROSEDALE HONOR A118 MRA118E (H)  
**Sire: ROSEDALE KAVIAR (P)**  
EC NO DOUBT 2022 P M685500 (P)  
ROSEDALE NET E58 (AI) (P)  
ROSEDALE NET B195 (P)

RC BUDSMYDAD 225 POLLED 225 P (P)  
EC NEW TREND 6G M 498475 (P)  
MISS EC DUKE 452-D 452-D D PED-3972E (D)  
**Dam: ROSEDALE RUBY A46 (AI) (P) MRA46E (P)**  
ROSEDALE SELECTOR (AI) (P)  
ROSEDALE RUBY X159 (P)  
ROSEDALE RUBY V120 MRV120E (H)



### Comments

**Top 5% Domestic & Export Indexes  
Top 10% Birth Weight, 200, 400 & 600 Day Growth  
Top 15% Milk**

A lovely bull from the famous Ruby line of females out of the new sire on the scene Rosedale Kaviar. Great type and curve bending numbers, a bull not to be missed. **HOMOZYGOUS POLLED**

Purchaser

\$

### Index \$ Value

Domestic (\$)			Export (\$)		
+\$ 50			+\$ 72		
Charolais Group Breedplan EBV's					
	Birth Weight	200 day growth	400 day growth	600 day growth	Milk
EBV	-1.3	+18	+34	+49	+11
ACC	73%	62%	65%	69%	46%
Raw Data					
Weight	P8	Rib	EMA	IMF %	Scrotal

43



41





# 45 ROSEDALE MAYHEM (P)

Born: 17/09/2016  
Society ID: MRM115E

FERNVALE TRAPPER FENT50E (H)  
ROSEDALE DARWIN (P)  
ROSEDALE GRACE A97 (AI) (ET) (P)  
**Sire: ROSEDALE H168 (P)**  
PARINGA NOVOTEL A100 (AI) (ET) (P)  
ROSEDALE BEATRIX D148 (P)  
ROSEDALE BEATRIX Z185 (P)

NOVOTEL 5897127519 OAFS7519F (H)  
PARINGA NOVOTEL A100 (AI) (ET) (P)  
PARINGA FASTRACK Y654 (AI) (ET) (P)  
**Dam: ROSEDALE G79E MRG79E**  
FERNVALE TRAPPER FENT50E (H)  
ROSEDALE BOBBIN Z154 (P)  
ROSEDALE BOBBIN U97 (P)



## Comments

**Top 5% Milk**  
**Top 20% Domestic & Export Indexes**  
**Top 25% Birth Weight**

Mayhem is a thickset heavier bull who would do a great job in any commercial situation. He is the perfect bull to add length and stretch into his calves. **HOMOZYGOUS POLLED**

Purchaser

\$

## Index \$ Value

Domestic (\$)			Export (\$)		
+\$ 34			+\$ 49		
Charolais Group Breedplan EBV's					
	Birth Weight	200 day growth	400 day growth	600 day growth	Milk
EBV	-0.5	+11	+23	+35	+15
ACC	74%	65%	68%	72%	46%
Raw Data					
Weight	P8	Rib	EMA	IMF %	Scrotal

# 46 ROSEDALE MARLEY (P)

Born: 03/10/2016  
Society ID: MRM100E

FERNVALE TRAPPER FENT50E (H)  
ROSEDALE DARWIN (P)  
ROSEDALE GRACE A97 (AI) (ET) (P)  
**Sire: ROSEDALE H168 (P)**  
PARINGA NOVOTEL A100 (AI) (ET) (P)  
ROSEDALE BEATRIX D148 (P)  
ROSEDALE BEATRIX Z185 (P)

NOVOTEL 5897127519 OAFS7519F (H)  
PARINGA NOVOTEL A100 (AI) (ET) (P)  
PARINGA FASTRACK Y654 (AI) (ET) (P)  
**Dam: ROSEDALE ESTRA E97 (P)**  
MINNIE-VALE DEPUTY (P)  
ROSEDALE ESTRA Z77 (P) MRZ77E (P)  
ROSEDALE ESTRA V53 (P)



## Comments

**Top 1% 600 Day Growth**  
**Top 5% 200 & 400 Day Growth, Milk, Export Index**  
**Top 10% Domestic Index**

A very classy bull with softness meat and soundness. Marley is out of a proven dam and his growth numbers are very impressive for a below breed average birth weight. This guy ticks a lot of boxes. **HOMOZYGOUS POLLED**

Purchaser

\$

## Index \$ Value

Domestic (\$)			Export (\$)		
+\$ 44			+\$ 67		
Charolais Group Breedplan EBV's					
	Birth Weight	200 day growth	400 day growth	600 day growth	Milk
EBV	+0.1	+19	+39	+63	+14
ACC	74%	64%	67%	71%	46%
Raw Data					
Weight	P8	Rib	EMA	IMF %	Scrotal

# 47 WITHDRAWN

Born:  
Society ID:



## Comments

Purchaser

\$

## Index \$ Value

Domestic (\$)			Export (\$)		
+\$			+\$		
Charolais Group Breedplan EBV's					
	Birth Weight	200 day growth	400 day growth	600 day growth	Milk
EBV					
ACC					
Raw Data					
Weight	P8	Rib	EMA	IMF %	Scrotal

## 48 ROSEDALE MATHEW (P) (R/F)

Born: 03/11/2016  
Society ID: MRM142E

LT BLUEGRASS 4017P M686569 (P)  
LT LEDGER 0332 (P)  
LT BRENDA 6120 PLD PED-6992E  
**Sire: AIRLIE KOWTOW (AI) (ET) (P) (R/F)**  
AIRLIE VERSION (TW)  
AIRLIE IONA Z608E Z608E (P)  
AIRLIE IONA W209E (AI) (P)

LT EASY BLEND 5125 PLD (P)  
ROSEDALE FIRST CLASS (AI) (P)  
ROSEDALE CINDERELLA D6 (P)  
**Dam: ROSEDALE RUBY J110 (P)**  
REIDS ASSASIN (P)  
ROSEDALE RUBY E157 (P)  
ROSEDALE RUBY B31 (P)



### Comments

**Top 15% Birth Weight**  
**Top 25% Milk**

An eye appealing, lower birthweight bull. Oozing softness, this red factor bull will suit a lot of producers. Low birthweight and calving ease on both sides of his pedigree. **HOMOZYGOUS POLLED**

Purchaser

\$

### Index \$ Value

Domestic (\$)			Export (\$)		
+\$ 31			+\$ 41		
Charolais Group Breedplan EBV's					
	Birth Weight	200 day growth	400 day growth	600 day growth	Milk
EBV	-1.2	+8	+19	+22	+9
ACC	58%	56%	60%	66%	35%
Raw Data					
Weight	P8	Rib	EMA	IMF %	Scrotal

## 49 ROSEDALE MOSS (AI) (P/S)

Born: 30/10/2016  
Society ID: MRM273E

SPARROWS DURANGO 585P PED-9528E  
WINN MANS LANZA 610S (P) OACB7395E (P)  
WINN MAN MERIT 036K PED-7547E  
**Sire: ROSEDALE JUKE (AI) (ET) (P)**  
FERNVALE TRAPPER FENT50E (H)  
ROSEDALE REBECCA A38 (P)  
ROSEDALE REBECCA V56 (P)

NOVOTEL 5897127519 OAFS7519F (H)  
PARINGA NOVOTEL A100 (AI) (ET) (P)  
PARINGA FASTRACK Y654 (AI) (ET) (P)  
**Dam: ROSEDALE RUBY H301 (P)**  
FERNVALE TRAPPER FENT50E (H)  
ROSEDALE RUBY W46 (P)  
ROSEDALE RUBY Q22 (P)



### Comments

**Top 10% 600 Day Growth, Export Index**  
**Top 15% Milk, Domestic Index**  
**Top 20% 400 Day Growth**  
**Top 25% Birth Weight, 200 Day Growth**

A great bull that expresses thickness and length and displays a great set of curve bending numbers. We love the power and presence of this good bull.

Purchaser

\$

### Index \$ Value

Domestic (\$)			Export (\$)		
+\$ 38			+\$ 58		
Charolais Group Breedplan EBV's					
	Birth Weight	200 day growth	400 day growth	600 day growth	Milk
EBV	-0.5	+15	+31	+49	+11
ACC	70%	59%	62%	68%	42%
Raw Data					
Weight	P8	Rib	EMA	IMF %	Scrotal

48



49



# 50 ROSEDALE MICHAELANGELO (P)

Born: 20/08/2016  
Society ID: MRM148E

SVY PIONEER 402P PED-8416E (D)  
SVY PILGRIM PLD 655S (P)  
HFCC FRENCHKISS 919J PED-9584E  
**Sire: ROSEDALE HARRY (AI) (P)**  
DSK WW YABBA DABBA DO Y4 (AI)  
ROSEDALE CANDY C36 (P)  
ROSEDALE CANDY Z34 (P)

NOVOTEL 5897127519 OAFS7519F (H)  
PARINGA NOVOTEL A100 (AI) (ET) (P)  
PARINGA FASTRACK Y654 (AI) (ET) (P)  
**Dam: ROSEDALE KRISTINA F85 (H)**  
FERNVALE TRAPPER FENT50E (H)  
ROSEDALE KRISTINA Z110 (P)  
ROSEDALE KRISTINA U40 (AI) (P)



## Comments

**Top 5% 200 Day Growth**  
**Top 15% Export Index**  
**Top 20% Birth Weight, 400 & 600 Day Growth, Milk, Domestic Index**

A clean skinned and sleek stylish bull by Harry. A great data set to back up a great bull who is very well put together. A beautiful clean front and strong polled head.

Purchaser

\$

## Index \$ Value

Domestic (\$)			Export (\$)		
+\$ 36			+\$ 52		
Charolais Group Breedplan EBV's					
	Birth Weight	200 day growth	400 day growth	600 day growth	Milk
EBV	-0.6	+19	+31	+44	+10
ACC	73%	63%	66%	71%	45%
Raw Data					
Weight	P8	Rib	EMA	IMF %	Scrotal

# 51 ROSEDALE MACK (P) (TW)

Born: 07/09/2016  
Society ID: MRM94E

FERNVALE TRAPPER FENT50E (H)  
ROSEDALE DARWIN (P)  
ROSEDALE GRACE A97 (AI) (ET) (P)  
**Sire: ROSEDALE H168 (P)**  
PARINGA NOVOTEL A100 (AI) (ET) (P)  
ROSEDALE BEATRIX D148 (P)  
ROSEDALE BEATRIX Z185 (P)

MINNIE-VALE DEPUTY (P)  
ROSEDALE ZINGER (P)  
ROSEDALE NICKY X7 (AI) (P)  
**Dam: ROSEDALE NET D9 (P)**  
FERNVALE TRAPPER FENT50E (H)  
ROSEDALE NET Z12 (P)  
ROSEDALE NET 16 (P)



## Comments

**Top 20% 600 Day Growth, Export Index**  
**Top 25% 400 Day Growth, Domestic Index**

A good soft skinned, well natured bull who is squarely made. Backed by great numbers and some great breeding with excellent growth at 400 and 600 days from a moderate birth weight. **HOMOZYGOUS POLLED**

Purchaser

\$

## Index \$ Value

Domestic (\$)			Export (\$)		
+\$ 33			+\$ 47		
Charolais Group Breedplan EBV's					
	Birth Weight	200 day growth	400 day growth	600 day growth	Milk
EBV	+0.2	+13	+29	+43	+15
ACC	62%	55%	59%	58%	47%
Raw Data					
Weight	P8	Rib	EMA	IMF %	Scrotal

# 52 ROSEDALE MADOC (P)

Born: 12/08/2016  
Society ID: MRM261E

PARINGA NOVOTEL A100 (AI) (ET) (P)  
ROSEDALE FAIRLANE (P)  
ROSEDALE HONOR A118 (H)  
**Sire: ROSEDALE KAVIAR (P)**  
EC NO DOUBT 2022 P M685500 (P)  
ROSEDALE NET E58 (AI) (P)  
ROSEDALE NET B195 (P)

PALGROVE WISDOM (AI) (ET) (P)  
CANOONA CAVALERO (P)  
PALGROVE ESTELLA 174 (AI) (P)  
**Dam: ROSEDALE ESTRA H55 (P)**  
FERNVALE TRAPPER FENT50E (H)  
ROSEDALE ESTRA A92 (P)  
ROSEDALE ESTRA V53 (P)



## Comments

**Top 10% 400 & 600 Day Growth, Milk, Domestic & Export Indexes**  
**Top 15% Birth Weight, 200 Day Growth**

A clean fronted, smooth and thick Kaviar son of the high quality. Great lower birth and solid growth numbers. **HOMOZYGOUS POLLED**

Purchaser

\$

## Index \$ Value

Domestic (\$)			Export (\$)		
+\$ 45			+\$ 64		
Charolais Group Breedplan EBV's					
	Birth Weight	200 day growth	400 day growth	600 day growth	Milk
EBV	-1.1	+17	+34	+49	+13
ACC	73%	60%	64%	69%	37%
Raw Data					
Weight	P8	Rib	EMA	IMF %	Scrotal



## 53 ROSEDALE MACHO (P) (R/F)

Born: 11/09/2016  
Society ID: MRM137E

LT BLUEGRASS 4017P M686569 (P)  
LT LEDGER 0332 (P)  
LT BRENDA 6120 PLD PED-6992E  
**Sire: AIRLIE KOWTOW (AI) (ET) (P) (R/F)**  
AIRLIE VERSION (TW)  
AIRLIE IONA Z608E Z608E (P)  
AIRLIE IONA W209E (AI) (P)

NWMSU DOC SILVER 362 PLD M669488 (P)  
ASCOT DOC SILVER G100E (AI) (ET) (P/S)  
PARINGA RIO BRAVO E310 (AI) (ET) (P)  
**Dam: ROSEDALE BUTTERSCOTCH J269 (P)**  
ROSEDALE WILLIE (P) MRW114E (P)  
ROSEDALE BUTTERSCOTCH A22 (P)  
ROSEDALE BUTTERSCOTCH R48 (P)



### Comments

**Top 10% Birth Weight**  
**Top 20% Milk**

Excellent more moderate framed yet soft and soggy young bull. You can see the softness in his coat - a great safe bull to use. **HOMOZYGOUS POLLED**

Purchaser

\$

### Index \$ Value

Domestic (\$)	Export (\$)
+\$ 16	+\$ 17

### Charolais Group Breedplan EBV's

	Birth Weight	200 day growth	400 day growth	600 day growth	Milk
EBV	-1.4	+7	+8	+4	+10
ACC	71%	58%	62%	68%	37%

### Raw Data

Weight	P8	Rib	EMA	IMF %	Scrotal

## 54 ROSEDALE MIAMI (P)

Born: 05/09/2016  
Society ID: MRM174E

SVY PIONEER 402P PED-8416E (D)  
SVY PILGRIM PLD 655S (P)  
HFCC FRENCHKISS 919J PED-9584E  
**Sire: ROSEDALE HARRY (AI) (P)**  
DSK WW YABBA DABBA DO Y4 (AI)  
ROSEDALE CANDY C36 (P)  
ROSEDALE CANDY Z34 (P)

PINAY 8552394134 OAFU4134F (H)  
PALGROVE EXPO (AI) (ET) (P)  
PALGROVE ESTELLA 130 (AI) (P)  
**Dam: ROSEDALE EMPRESS J257 (P)**  
PALGROVE COACH (AI) (ET) (P)  
ROSEDALE EMPRESS F183 (P)  
ROSEDALE EMPRESS B164 (P)



### Comments

**Top 10% 200 Day Growth**

A bull not to be discounted. Natural thickness and smooth up front. A good commercial bull who will achieve great weaning weights. **HOMOZYGOUS POLLED**

Purchaser

\$

### Index \$ Value

Domestic (\$)	Export (\$)
+\$ 21	+\$ 30

### Charolais Group Breedplan EBV's

	Birth Weight	200 day growth	400 day growth	600 day growth	Milk
EBV	+0.2	+18	+26	+35	+7
ACC	73%	62%	66%	70%	40%

### Raw Data

Weight	P8	Rib	EMA	IMF %	Scrotal

50



54



55

## ROSEDALE MONTREAL (P)

Born: 12/09/2019

Society ID: MRM27E

LT BLUEGRASS 4017P M686569 (P)  
 LT LEDGER 0332 (P)  
 LT BRENDA 6120 PLD PED-6992E  
**Sire: AIRLIE KOWTOW (AI) (ET) (P) (R/F)**  
 AIRLIE VERSION (TW) A1SV251E (D)  
 AIRLIE IONA Z608E Z608E (P)  
 AIRLIE IONA W209E (AI) (P)

PARINGA NOVOTEL A100 (AI) (ET) (P)  
 ROSEDALE FAIRLANE (P)  
 ROSEDALE HONOR A118 MRA118E (H)  
**Dam: ROSEDALE REBECCA K172 (P)**  
 FERNVALE TRAPPER FENT50E (H)  
 ROSEDALE REBECCA A143 (P)  
 ROSEDALE REBECCA R137 (AI) (ET) (P)



## Comments

**Top 15% Milk**  
**Top 20% Birth Weight**

A thick and square bull that grabs the eye. Excellent temperament and for a heifers first calf has grown out well. Will only continue to improve.  
**HOMOZYGOUS POLLED**

Purchaser

\$

## Index \$ Value

Domestic (\$)			Export (\$)		
+\$ 11			+\$ 11		
Charolais Group Breedplan EBV's					
	Birth Weight	200 day growth	400 day growth	600 day growth	Milk
EBV	-0.6	+10	+16	+17	+11
ACC	69%	58%	62%	68%	36%
Raw Data					
Weight	P8	Rib	EMA	IMF %	Scrotal

56

## ROSEDALE NINJA (P)

Born: 05/04/2017

Society ID: MRN13E

PARINGA NOVOTEL A100 (AI) (ET) (P)  
 ROSEDALE FAIRLANE (P)  
 ROSEDALE HONOR A118 (H)  
**Sire: ROSEDALE KAVIAR (P)**  
 EC NO DOUBT 2022 P M685500 (P)  
 ROSEDALE NET E58 (AI) (P)  
 ROSEDALE NET B195 (P)

PARINGA NOVOTEL A100 (AI) (ET) (P)  
 ROSEDALE FAIRLANE (P)  
 ROSEDALE HONOR A118 (H)  
**Dam: ROSEDALE ZIG J28 (P) MRJ28E (P)**  
 MINNIE-VALE DEPUTY (P)  
 ROSEDALE ZIG B146 (P)  
 ROSEDALE ZIG X114 (H)



## Comments

**Top 5% 600 Day Growth**  
**Top 10% 200 & 400 Day Growth**  
**Top 15% Domestic & Export Indexes**  
**Top 25% Birth Weight**

A terrific young bull with a big future. Excellent structure, nature maturity pattern. You can see this bull has huge potential. **HOMOZYGOUS POLLED**

Purchaser

\$

## Index \$ Value

Domestic (\$)			Export (\$)		
+\$ 38			+\$ 57		
Charolais Group Breedplan EBV's					
	Birth Weight	200 day growth	400 day growth	600 day growth	Milk
EBV	-0.3	+18	+36	+55	+14
ACC	73%	56%	58%	58%	37%
Raw Data					
Weight	P8	Rib	EMA	IMF %	Scrotal

57

## ROSEDALE NEMO (P)

Born: 30/04/2017

Society ID: MRN14E

PARINGA NOVOTEL A100 (AI) (ET) (P)  
 ROSEDALE FAIRLANE (P)  
 ROSEDALE HONOR A118  
**Sire: ROSEDALE KAVIAR (P)**  
 EC NO DOUBT 2022 P M685500 (P)  
 ROSEDALE NET E58 (AI) (P)  
 ROSEDALE NET B195 (P)

PLATINUM YU-BET Y124E (P)  
 REIDS ASSASIN (P)  
 PLATINUM QUARTZ 3RD (AI) (ET) (P)  
**Dam: ROSEDALE BEATRIX E244 (P)**  
 MINNIE-VALE DEPUTY (P)  
 ROSEDALE BEATRIX Z26 (P)  
 ROSEDALE BEATRIX 8 (AI)



## Comments

**Top 5% Domestic & Export Indexes**  
**Top 10% Birth Weight, 600 Day Growth**  
**Top 15% Milk, 400 Day Growth**  
**Top 20% 200 Day Growth**

We find Nemo to be a great natured young bull with a big future ahead. There is so much consistency in his breeding you cannot go wrong, Soft yet still nice growth for age. Phenomenal set of EBV's.

Purchaser

\$

## Index \$ Value

Domestic (\$)			Export (\$)		
+\$ 51			+\$ 75		
Charolais Group Breedplan EBV's					
	Birth Weight	200 day growth	400 day growth	600 day growth	Milk
EBV	-1.5	+16	+33	+49	+11
ACC	72%	54%	56%	57%	43%
Raw Data					
Weight	P8	Rib	EMA	IMF %	Scrotal

58

## ROSEDALE NILE (P)

Born: 19/04/2017

Society ID: MRN34E

FERNVALE TRAPPER FENT50E (H)  
ROSEDALE DARWIN (P)  
ROSEDALE GRACE A97 (AI) (ET) (P)  
**Sire: ROSEDALE H168 (P)**  
PARINGA NOVOTEL A100 (AI) (ET) (P)  
ROSEDALE BEATRIX D148 (P)  
ROSEDALE BEATRIX Z185 (P)

PINAY 8552394134 OAFU4134F (H)  
PALGROVE EXPO (AI) (ET) (P)  
PALGROVE ESTELLA 130 (AI) (P)  
**Dam: ROSEDALE CANDY J3 (P)**  
PARINGA NOVOTEL A100 (AI) (ET) (P)  
ROSEDALE CANDY E168 (P)  
ROSEDALE CANDY Z74 (P)



## Comments

**Top 5% Milk**  
**Top 10% 600 Day Growth**  
**Top 15% 400 Day Growth, Domestic & Export Indexes**  
**Top 25% 200 Day Growth**

This young bull has a little bit of extra thickness and we really like how he is out together. Top of the pile for growth yet still so soft. **HOMOZYGOUS POLLED**

Purchaser

\$

## Index \$ Value

Domestic (\$)	Export (\$)
+\$ 38	+\$ 53

## Charolais Group Breedplan EBV's

	Birth Weight	200 day growth	400 day growth	600 day growth	Milk
EBV	-0.1	+15	+33	+50	+15
ACC	72%	57%	59%	59%	42%

## Raw Data

Weight	P8	Rib	EMA	IMF %	Scrotal

59

## ROSEDALE NO WORRIES (P/S)

Born: 09/04/2017

Society ID: MRN39E

FERNVALE TRAPPER FENT50E (H)  
ROSEDALE DARWIN (P)  
ROSEDALE GRACE A97 (AI) (ET) (P)  
**Sire: ROSEDALE H168 (P) MRH168E (P)**  
PARINGA NOVOTEL A100 (AI) (ET) (P)  
ROSEDALE BEATRIX D148 (P)  
ROSEDALE BEATRIX Z185 (P)

NOVOTEL 5897127519 OAFS7519F (H)  
PARINGA NOVOTEL A100 (AI) (ET) (P)  
PARINGA FASTRACK Y654 (AI) (ET) (P)  
**Dam: ROSEDALE BUTTERSCOTCH H127 (P) (R/F)**  
LHD MR PERFECT Y416 (P)  
ROSEDALE BUTTERSCOTCH W156 (AI) (P) (R/F)  
ROSEDALE BUTTERSCOTCH U119 R/F (P)



## Comments

**Top 10% Milk**  
**Top 15% 200 Day Growth, Export Index**  
**Top 20% Domestic Index**  
**Top 25% 400 & 600 Day Growth**

Another great young bull sired by Rosedale H168. This bull has depth, length and softness that has been a feature of the bulls presented today. If you missed out earlier in the sale this is a quality bull.

Purchaser

\$

## Index \$ Value

Domestic (\$)	Export (\$)
+\$ 35	+\$ 53

## Charolais Group Breedplan EBV's

	Birth Weight	200 day growth	400 day growth	600 day growth	Milk
EBV	+0.1	+17	+29	+47	+12
ACC	73%	58%	61%	61%	46%

## Raw Data

Weight	P8	Rib	EMA	IMF %	Scrotal

56



59





PARINGA NOVOTEL A100 (AI) (ET) (P)  
 ROSEDALE FAIRLANE (P)  
 ROSEDALE HONOR A118  
**Sire: ROSEDALE KAVIAR (P)**  
 EC NO DOUBT 2022 P M685500 (P)  
 ROSEDALE NET E58 (AI) (P)  
 ROSEDALE NET B195 (P)

SVY FREEDOM (P)  
 GERRARD MONTEZUMA (P)  
 GERRARD ROXANNE (P)  
**Dam: ROSEDALE AMY H288 (P)**  
 ROSEDALE ZINGER (P)  
 ROSEDALE AMY D68 (P)  
 ROSEDALE AMY (P)



## Comments

**Top 1% Milk**  
**Top 5% 400 & 600 Day Growth**  
**Top 20% 200 Day Growth, Domestic & Export Indexes**

What a great young bull to finish the charolais draft. His mother AMY was a Junior Champion at the Sydney Royal Show, back in the old showing days. She is now producing great calves year on year. Nelson is a soft and growthy young bull you can be sure will breed consistently.

Purchaser

\$

## Index \$ Value

Domestic (\$)

Export (\$)

+\$ 34

+\$ 48

## Charolais Group Breedplan EBV's

	Birth Weight	200 day growth	400 day growth	600 day growth	Milk
EBV	+1.4	+16	+29	+40	+7
ACC	71%	61%	61%	59%	43%

## Raw Data

Weight	P8	Rib	EMA	IMF %	Scrotal

## Managing Yearling Bulls

Yearling Bulls are a great way to introduce new genetics into a breeding operation at a faster pace. If managed properly yearling bulls can also potentially be used for an extra joining year than an older bull. Yearling bulls are still growing strongly and tend to be leaner than older bulls carrying less fat reserves. It is important they are managed correctly as they are far more sensitive to poor nutrition, internal and external parasites than older bulls. Much of this management is more about common sense than anything else.

Our yearling bulls have all passed semen tests in April before most of them were even 12 months old. Good nutrition has sped up their sexual maturity and as can be seen many of the yearling's scrotals have developed very well. For Charolais Bulls 12-14 months Dr Glen Coulter from the Agriculture Canada Research station in Alberta has documented a minimum scrotal circumference of 32cm based on large amounts of research. This figure is used as a minimum benchmark in the selection process for the yearling bulls we allow into this sale.

## Key management steps to Ensuring Success using Yearling Bulls.

- While they are young use them in single joinings or with bulls the same age. This is a far more efficient way to use them and protects them from injury by larger dominant bulls.

- Take a conservative approach in their first year, a maximum of 30 females is a commonly recommended number.

- In their first joining don't use them for too long if conditions get tough. A maximum 8 week joining period is recommended in most conditions, it is important young bulls keep their condition so they continue to develop.

When spelling them give them high quality feed, this will ensure their recovery and continued development.

# studstocksales.com



@struanp



studstocksales.com

# SIRE

# HARVIE CRYSTAL D TRIGGER (R/F)(P)

Born: 5/02/2007  
Society ID: n/a

LABRAMOR HALLMARK H55E  
BULLS M07  
BULLS 129  
**Sire: MAUNGAHINA TOWKAY (P)**  
BALDRIDGE FASTTRACK 82E (P)  
MAUNGAHINA PRINCESS (P)  
PALGROVE IDEAL 43 (AI) (P)

LANGS ERIC THE RED (P)  
HARVIE JAGER (P)  
HARVIE MISS FRANCIS (P)  
**Dam: HARVIE MS MOLSON 53M (P)**  
KJP SKY FIRE 51T  
HARVIE MISS FIREFLY 31F (P)  
PAR MISS CANDY



A herd sire in the Harvie Family's Canadian operation. A rarely found high quality Dark polled Red Charolais sire that we purchased the semen to in 2011. Half brother to the widely used Harvie Redemption. Has done a fantastic job on his calves.

## Canadian Charolais EPD's

DIR	DTRS	GL	BWT	200	400	600	MWT
+7.9	+2.2	-2.8	-0.9	+16	+33	+39	+39
MILK	SS	CWT	EMA	RIB	RMP	RBY	IMF
+13	+1.2	-	+0.5	-0.2	-0.2	-0.1	+0.3
Index \$ Value		Domestic (\$)			Export (\$)		

# SIRE

# AIRLIE JONTY (R/F) (P)

Born: 23/08/2013  
Society ID: A1SJ54E

LT SILVER VALUE 2122 P M645761 (P)  
AIRLIE CUPID (AI) (ET) (P/S) A1SC154E (S)  
AIRLIE PRINCESS Z258E (R/F) A1SZ258E (D)  
**Sire: AIRLIE FIALE (P) (R/F)**  
AIRLIE WEAPON (AI) (ET)  
AIRLIE KELLY Y253E (R/F)  
AIRLIE KELLY Q167E (AI)

GUNNADOO VAUN V50E (P)  
AIRLIE Z123E (AI) (P)  
AIRLIE V61 (AI) (ET) (P)  
**Dam: AIRLIE IMOGENE E762E (R/F)**  
AIRLIE UNCANNY (AI) (ET) (P)  
AIRLIE IMOGENE Y793E (P) (R/F)  
AIRLIE IMOGENE V226E



A great thick, meaty and rare Dark Red Charolais Sire doing a great job on our black commercial herd. Some lovely bulls in this draft, first sons sell this year.

## Charolais Group Breedplan EBV's

DIR	DTRS	GL	BWT	200	400	600	MWT
+4.1	+6.2	-6.1	+1.4	+10	+17	+28	+35
54%	52%	76%	74%	68%	69%	72%	67%
MILK	SS	CWT	EMA	RIB	RMP	RBY	IMF
+8	0.0	+24	+1.1	+0.5	+0.3	+0.5	+0.3
59%	58%	62%	56%	59%	58%	58%	55%
Index \$ Value		Domestic (\$)			Export (\$)		



61

ROSEDALE M188 (P)

Born: 24/08/2016

Tag: MRCAM188

AIRLIE FIABLE (P) (RF)

Sire: AIRLIE JONTY (P) (R/F)

AIRLIE IMOGINE (P) (RF)

Dam: SELECTED ANGUS COW

Raw Data					
Weight	P8	Rib	EMA	IMF %	Scrotal
Purchaser			\$		

62

ROSEDALE M86 (P)

Born: 1/09/2016

Tag: MR C/A M86

G BROS THIN RED LINE (P) (RF)

Sire: CHALLAMBI KANGA (AI) (P) (R/F)

GOBONGO ISABELLA (P) (ET) (RF)

Dam: SELECTED ANGUS COW

Raw Data					
Weight	P8	Rib	EMA	IMF %	Scrotal
Purchaser			\$		

63

ROSEDALE M113 (P)

Born: 21/09/2016

Tag: MR C/A L113

MAUNGAHINA TOWKAY (P)

Sire: HARVIE CRYSTAL D TRIGGER (R/F) (P)

HARVIE MS MOLSON 53M (P)

Dam: SELECTED ANGUS COW

Raw Data					
Weight	P8	Rib	EMA	IMF %	Scrotal
Purchaser			\$		

64

ROSDALE M203

Born: 14/9/2016

Tag: MR C/A L44

AIRLIE FIABLE (P) (RF)

Sire: AIRLIE JONTY (P) (R/F)

AIRLIE IMOGINE (P) (RF)

Dam: SELECTED ANGUS COW

Raw Data					
Weight	P8	Rib	EMA	IMF %	Scrotal
Purchaser			\$		

65

ROSEDALE L80 (P)

Born: 12/09/16

Tag: MR C/A L80

AIRLIE FIABLE (P) (RF)

Sire: AIRLIE JONTY (P) (R/F)

AIRLIE IMOGINE (P) (RF)

Dam: SELECTED ANGUS COW

Raw Data					
Weight	P8	Rib	EMA	IMF %	Scrotal
Purchaser			\$		

66

ROSEDALE L142 (P)

Born: 6/08/2016

Tag: MR C/A L142

AIRLIE FIABLE (P) (RF)

Sire: AIRLIE JONTY (P) (R/F)

AIRLIE IMOGINE (P) (RF)

Dam: SELECTED ANGUS COW

Raw Data					
Weight	P8	Rib	EMA	IMF %	Scrotal
Purchaser			\$		

67

ROSEDALE L131 (P)

Born: 10/09/16

Tag: MRC/A L131

MAUNGAHINA TOWKAY (P)

Sire: HARVIE CRYSTAL D TRIGGER (R/F) (P)

HARVIE MS MOLSON 53M (P)

Dam: SELECTED ANGUS COW

Raw Data					
Weight	P8	Rib	EMA	IMF %	Scrotal
Purchaser			\$		

68

ROSEDALE M118 (P)

Born: 8/09/16

Tag: MRCAM118

AIRLIE FIABLE (P) (RF)

Sire: AIRLIE JONTY (P) (R/F)

AIRLIE IMOGINE (P) (RF)

Dam: SELECTED ANGUS COW

Raw Data					
Weight	P8	Rib	EMA	IMF %	Scrotal
Purchaser			\$		



<b>69</b>	<b>ROSEDALE L69 (P)</b>				
	<b>Born:</b> 29/08/2016	<b>Tag:</b> MR C/A L69			
AIRLIE FIABLE (P) (RF) <b>Sire: AIRLIE JONTY (P) (R/F)</b> AIRLIE IMOGINE (P) (RF)					
<b>Dam: SELECTED ANGUS COW</b>					
Raw Data					
Weight	P8	Rib	EMA	IMF %	Scrotal
Purchaser				\$	

<b>70</b>	<b>ROSEDALE L327 (P)</b>				
	<b>Born:</b> 23/09/16	<b>Tag:</b> MRC/A L327			
MAUNGAHINA TOWKAY (P) <b>Sire: HARVIE CRYSTAL D TRIGGER (R/F) (P)</b> HARVIE MS MOLSON 53M (P)					
<b>Dam: SELECTED ANGUS COW</b>					
Raw Data					
Weight	P8	Rib	EMA	IMF %	Scrotal
Purchaser				\$	

<b>71</b>	<b>ROSEDALE M150 (P)</b>				
	<b>Born:</b> 3/09/16	<b>Tag:</b> MR CAM150			
MAUNGAHINA TOWKAY (P) <b>Sire: HARVIE CRYSTAL D TRIGGER (R/F) (P)</b> HARVIE MS MOLSON 53M (P)					
<b>Dam: SELECTED ANGUS COW</b>					
Raw Data					
Weight	P8	Rib	EMA	IMF %	Scrotal
Purchaser				\$	

<b>72</b>	<b>ROSEDALE M143 (P)</b>				
	<b>Born:</b> 5/10/16	<b>Tag:</b> MRC/A M143			
AIRLIE FIABLE (P) (RF) <b>Sire: AIRLIE JONTY (P) (R/F)</b> AIRLIE IMOGINE (P) (RF)					
<b>Dam: SELECTED ANGUS COW</b>					
Raw Data					
Weight	P8	Rib	EMA	IMF %	Scrotal
Purchaser				\$	

<b>73</b>	<b>ROSEDALE M74 (P)</b>				
	<b>Born:</b> 7/09/16	<b>Tag:</b> MR C/A M74			
G BROS THIN RED LINE (P) (RF) <b>Sire: CHALLAMBI KANGA (AI) (P) (R/F)</b> GOBONGO ISABELLA (P) (ET) (RF)					
<b>Dam: SELECTED ANGUS COW</b>					
Raw Data					
Weight	P8	Rib	EMA	IMF %	Scrotal
Purchaser				\$	

<b>74</b>	<b>ROSEDALE M65 (P)</b>				
	<b>Born:</b> 27/08/16	<b>Tag:</b> MR CAM65			
MAUNGAHINA TOWKAY (P) <b>Sire: HARVIE CRYSTAL D TRIGGER (R/F) (P)</b> HARVIE MS MOLSON 53M (P)					
<b>Dam: SELECTED ANGUS COW</b>					
Raw Data					
Weight	P8	Rib	EMA	IMF %	Scrotal
Purchaser				\$	

<b>75</b>	<b>ROSEDALE M117 (P)</b>				
	<b>Born:</b> 14/9/2016	<b>Tag:</b> MR CAM117			
G BROS THIN RED LINE (P) (RF) <b>Sire: CHALLAMBI KANGA (AI) (P) (R/F)</b> GOBONGO ISABELLA (P) (ET) (RF)					
<b>Dam: SELECTED ANGUS COW</b>					
Raw Data					
Weight	P8	Rib	EMA	IMF %	Scrotal
Purchaser				\$	

<b>76</b>	<b>ROSEDALE M59(P)</b>				
	<b>Born:</b> 19/9/2016	<b>Tag:</b> MR CAM59			
AIRLIE FIABLE (P) (RF) <b>Sire: AIRLIE JONTY (P) (R/F)</b> AIRLIE IMOGINE (P) (RF)					
<b>Dam: SELECTED ANGUS COW</b>					
Raw Data					
Weight	P8	Rib	EMA	IMF %	Scrotal
Purchaser				\$	

77

ROSEDALE M133 (P)

Born: 20/09/2016

Tag: MR CAM133

AIRLIE FIABLE (P) (RF)

Sire: AIRLIE JONTY (P) (R/F)

AIRLIE IMOGINE (P) (RF)

Dam: SELECTED ANGUS COW

Raw Data					
Weight	P8	Rib	EMA	IMF %	Scrotal
Purchaser				\$	

78

ROSEDALE M50 (P/S)

Born: 18/9/2016

Tag: MR CAM50

AIRLIE FIABLE (P) (RF)

Sire: AIRLIE JONTY (P) (R/F)

AIRLIE IMOGINE (P) (RF)

Dam: SELECTED ANGUS COW

Raw Data					
Weight	P8	Rib	EMA	IMF %	Scrotal
Purchaser				\$	

79

ROSEDALE M633 (P)

Born: 16/7/2016

Tag: MR CAM633

PALGROVE DARWIN (P)

Sire: ROSEDALE HAIGH (P)

ROSEDALE GAITY C99 (P)

Dam: SELECTED ANGUS COW

Raw Data					
Weight	P8	Rib	EMA	IMF %	Scrotal
Purchaser				\$	

80

ROSEDALE M636 (P)

Born: 02/08/16

Tag: MR CAM636

PALGROVE DARWIN (P)

Sire: ROSEDALE HAIGH (P)

ROSEDALE GAITY C99 (P)

Dam: SELECTED ANGUS COW

Raw Data					
Weight	P8	Rib	EMA	IMF %	Scrotal
Purchaser				\$	

81

ROSEDALE L227 (P)

Born: 18/08/2016

Tag: MR CAL226

PALGROVE DARWIN (P)

Sire: ROSEDALE HAIGH (P)

ROSEDALE GAITY C99 (P)

Dam: SELECTED ANGUS COW

Raw Data					
Weight	P8	Rib	EMA	IMF %	Scrotal
Purchaser				\$	

82

ROSEDALE M21(P)

Born: 09/08/2016

Tag: MRCSM21

PALGROVE EXPO (p)

Sire: ROSEDALE HIRST (P)

ROSEDALE BUTTERSCOTCH E147 (P)

Dam: SELECTED SHORTHORN COW

Raw Data					
Weight	P8	Rib	EMA	IMF %	Scrotal
Purchaser				\$	

83

ROSEDALE M624 (P)

Born: 17/07/2016

Tag: MRCSM624

PALGROVE EXPO (p)

Sire: ROSEDALE HIRST (P)

ROSEDALE BUTTERSCOTCH E147 (P)

Dam: SELECTED SHORTHORN COW

Raw Data					
Weight	P8	Rib	EMA	IMF %	Scrotal
Purchaser				\$	

84

ROSEDALE M634 (P)

Born: 27/07/2016

Tag: MRCSM634

ROSEDALE FIRST CLASS

Sire: ROSEDALE HAKIN (P)

ROSEDALE BEATRIX E34 (P)

Dam: SELECTED SHORTHORN COW

Raw Data					
Weight	P8	Rib	EMA	IMF %	Scrotal
Purchaser				\$	

85	ROSEDALE M640 (P)				
	Born:	22/07/2016	Tag:	MRCSM640	
PALGROVE EXPO (p) <b>Sire: ROSEDALE HIRST (P)</b> ROSEDALE BUTTERSCOTCH E147 (P) <b>Dam: SELECTED SHORTHORN COW</b>					
Raw Data					
Weight	P8	Rib	EMA	IMF %	Scrotal
Purchaser				\$	

86	ROSEDALE M642 (P)				
	Born:	3/08/2016	Tag:	MRCSM642	
PALGROVE EXPO (p) <b>Sire: ROSEDALE HIRST (P)</b> ROSEDALE BUTTERSCOTCH E147 (P) <b>Dam: SELECTED SHORTHORN COW</b>					
Raw Data					
Weight	P8	Rib	EMA	IMF %	Scrotal
Purchaser				\$	

87	ROSEDALE M244 (P)				
	Born:	17/08/16	Tag:	MRCSM244	
DROSEDALE FIRST CLASS <b>Sire: ROSEDALE HAKIN (P)</b> ROSEDALE BEATRIX E34 (P) <b>Dam: SELECTED SHORTHORN COW</b>					
Raw Data					
Weight	P8	Rib	EMA	IMF %	Scrotal
Purchaser				\$	

88	ROSEDALE M276 (P)				
	Born:	27/07/16	Tag:	MRCSM276	
DROSEDALE FIRST CLASS <b>Sire: ROSEDALE HAKIN (P)</b> ROSEDALE BEATRIX E34 (P) <b>Dam: SELECTED SHORTHORN COW</b>					
Raw Data					
Weight	P8	Rib	EMA	IMF %	Scrotal
Purchaser				\$	

89	ROSEDALE M626 (P)				
	Born:	22/08/16	Tag:	MRCSM626	
PALGROVE EXPO (p) <b>Sire: ROSEDALE HIRST (P)</b> ROSEDALE BUTTERSCOTCH E147 (P) <b>Dam: SELECTED SHORTHORN COW</b>					
Raw Data					
Weight	P8	Rib	EMA	IMF %	Scrotal
Purchaser				\$	

90	ROSEDALE M631 (P)				
	Born:	19/07/16	Tag:	MRCSM631	
PALGROVE EXPO (p) <b>Sire: ROSEDALE HIRST (P)</b> ROSEDALE BUTTERSCOTCH E147 (P) <b>Dam: SELECTED SHORTHORN COW</b>					
Raw Data					
Weight	P8	Rib	EMA	IMF %	Scrotal
Purchaser				\$	

91	ROSEDALE M615 (P)				
	Born:	22/07/2016	Tag:	MRCSM615	
PALGROVE EXPO (p) <b>Sire: ROSEDALE HIRST (P)</b> ROSEDALE BUTTERSCOTCH E147 (P) <b>Dam: SELECTED SHORTHORN COW</b>					
Raw Data					
Weight	P8	Rib	EMA	IMF %	Scrotal
Purchaser				\$	

92	ROSEDALE M639 (P)				
	Born:	3/08/2016	Tag:	MRCSM639	
PALGROVE EXPO (p) <b>Sire: ROSEDALE HIRST (P)</b> ROSEDALE BUTTERSCOTCH E147 (P) <b>Dam: SELECTED SHORTHORN COW</b>					
Raw Data					
Weight	P8	Rib	EMA	IMF %	Scrotal
Purchaser				\$	









## 93 ROSEDALE RUBY N3 (P)

**Born:** 26/3/2017  
**Society ID:** MRN3E

PARINGA NOVOTEL (P)  
ROSEDALE FAIRLANE (P)  
ROSEDALE HONOR A118  
**Sire: ROSEDALE KAVIAR (P)**  
EC NO DOUBT (P)  
ROSEDALE NET E58 (P)  
ROSEDALE NET B195 (P)

NOVOTEL  
PARINGA NOVOTEL (P)  
PARINGA FAST TRACK Y654 (P)  
**Dam: ROSEDALE RUBY F17 (P)**  
PARINGA NOVOTEL A100 (AI) (ET) (P)  
ROSEDALE RUBY (P)  
ROSEDALE RUBY



### Comments

**Top 5% MILK**  
**Top 10% BIRTH WEIGHT, 400 & 600 DAY GROWTH**  
**Top 15% 200 DAY GROWTH**

Photograph available at [www.auctionsplus.com.au](http://www.auctionsplus.com.au)

**Purchaser**

\$

### Index \$ Value

Domestic (\$)	Export (\$)

### Charolais Group Breedplan EBV's

	Birth Weight	200 day growth	400 day growth	600 day growth	Milk
EBV	-1.5	+17	+34	+52	+16
ACC	73%	56%	58%	52%	45%

### Raw Data

Weight	P8	Rib	EMA	IMF %	

## 94 ROSEDALE GERTY N7 (P)

**Born:** 30/3/2017  
**Society ID:** MRN7E

PARINGA NOVOTEL (P)  
ROSEDALE FAIRLANE (P)  
ROSEDALE HONOR A118  
**Sire: ROSEDALE KAVIAR (P)**  
EC NO DOUBT (P)  
ROSEDALE NET E58 (P)  
ROSEDALE NET B195 (P)

FERNVALE TRAPPER  
ROSEDALE DARWIN (P)  
ROSEDALE GRACE A97 (P)  
**Dam: ROSEDALE GERTY H155 (P)**  
MINNIE VALE DEPUTY (P)  
ROSEDALE GERTY (P)  
ROSEDALE GERTY A149 (P)



### Comments

**Top 5% 600 Day Growth & Milk**  
**Top 10% 200, 400 Day Growth**

Photograph available at [www.auctionsplus.com.au](http://www.auctionsplus.com.au)

**Purchaser**

\$

### Index \$ Value

Domestic (\$)	Export (\$)
\$36	\$52

### Charolais Group Breedplan EBV's

	Birth Weight	200 day growth	400 day growth	600 day growth	Milk
EBV	+0.2	+18	+37	+55	+14
ACC	71%	54%	56%	57%	39%

### Raw Data

Weight	P8	Rib	EMA	IMF %	

## 95 ROSEDALE BEATRIX N10 (P)

**Born:** 10/4/2017  
**Society ID:** MRN10E

PARINGA NOVOTEL (P)  
ROSEDALE FAIRLANE (P)  
ROSEDALE HONOR A118  
**Sire: ROSEDALE KAVIAR (P)**  
EC NO DOUBT (P)  
ROSEDALE NET E58 (P)  
ROSEDALE NET B195 (P)

MD SENTINAL RULER G1520 M509416 (P/S)  
PARINGA SENTINAL RULER C93E (AI) (ET) (P)  
PARINGA DUKE Z1808 (AI) (ET) (D)  
**Dam: ROSEDALE BEATRIX H119 (P)**  
MRY10E  
ROSEDALE EEATREIX A209  
ROSEDALE BEATRIX R147 (P)



### Comments

**Top 5% 200, 600 Day Growth, Dom & Exp Index**  
**Top 10% Birth Weight & 400 Day Growth**

Photograph available at [www.auctionsplus.com.au](http://www.auctionsplus.com.au)

**Purchaser**

\$

### Index \$ Value

Domestic (\$)	Export (\$)
+\$ 53	+\$ 80

### Charolais Group Breedplan EBV's

	Birth Weight	200 day growth	400 day growth	600 day growth	Milk
EBV	-1.7	+19	+36	+58	+13
ACC	71%	55%	57%	59%	41%

### Raw Data

Weight	P8	Rib	EMA	IMF %	



# 96 ROSEDALE ZIG N15 (P)

**Born:** 6/4/2017  
**Society ID:** MRN15E

PARINGA NOVOTEL (P)  
ROSEDALE FAIRLANE (P)  
ROSEDALE HONOR A118  
**Sire: ROSEDALE KAVIAR (P)**  
EC NO DOUBT (P)  
ROSEDALE NET E58 (P)  
ROSEDALE NET B195 (P)

NOVOTEL  
PARINGA NOVOTEL (P)  
PARINGA FAST TRACK Y654 (P)  
**Dam: ROSEDALE ZIG H142 (P)**  
PARINGA NOVOTEL A100 (AI) (ET) (P)  
ROSEDALE ZIG Z43 (P)  
2UP ZIG 3 (P)



## Comments

**Top 5% Milk**  
**Top 10% 400 & 600 Day Growth**  
**Top 15% 200 Day Growth**

Photograph available at [www.auctionsplus.com.au](http://www.auctionsplus.com.au)

**Purchaser**

\$

## Index \$ Value

Domestic (\$)			Export (\$)		
+\$			+\$		
Charolais Group Breedplan EBV's					
	Birth Weight	200 day growth	400 day growth	600 day growth	Milk
EBV	-1.0	+17	+35	+55	+15
ACC	72%	55%	58%	58%	47%
Raw Data					
Weight	P8	Rib	EMA	IMF %	Scrotal

# 97 ROSEDALE NICKY N16 (P)

**Born:** 3/4/2017  
**Society ID:** MRN16E

PARINGA NOVOTEL (P)  
ROSEDALE FAIRLANE (P)  
ROSEDALE HONOR A118  
**Sire: ROSEDALE KAVIAR (P)**  
EC NO DOUBT (P)  
ROSEDALE NET E58 (P)  
ROSEDALE NET B195 (P)

LT SILVER VALUE (P)  
**Dam: ROSEDALE NICKY G185 (P)**  
EC NEW TREND (P)  
ROSEDALE NICKY X7  
ROSEDALE NICKY U98 (P)



## Comments

**Top 5% Milk**  
**Top 10% Birth, 200, 600 Day Growth**  
**Top 15% 400 Day Growth**

Photograph available at [www.auctionsplus.com.au](http://www.auctionsplus.com.au)

**Purchaser**

\$

## Index \$ Value

Domestic (\$)			Export (\$)		
+\$			+\$		
Charolais Group Breedplan EBV's					
	Birth Weight	200 day growth	400 day growth	600 day growth	Milk
EBV	-1.3	+18	+32	+50	+14
ACC	72%	56%	58%	58%	43%
Raw Data					
Weight	P8	Rib	EMA	IMF %	

# 98 ROSEDALE NICKY N21E

**Born:** 20/4/2017  
**Society ID:** MRN21E

PARINGA NOVOTEL (P)  
ROSEDALE FAIRLANE (P)  
ROSEDALE HONOR A118  
**Sire: ROSEDALE KAVIAR (P)**  
EC NO DOUBT (P)  
ROSEDALE NET E58 (P)  
ROSEDALE NET B195 (P)

NOVOTEL  
PARINGA NOVOTEL (P)  
PARINGA FAST TRACK Y654 (P)  
**Dam: ROSEDALE NICKY G238 (P)**  
EC NEW TREND (P)  
ROSEDALE NICKY X7  
ROSEDALE NICKY U98 (P)



## Comments

**Top 5% 200, 400 & 600 Day Growth**  
**Top 20% Milk**

Photograph available at [www.auctionsplus.com.au](http://www.auctionsplus.com.au)

**Purchaser**

\$

## Index \$ Value

Domestic (\$)			Export (\$)		
+\$			+\$		
Charolais Group Breedplan EBV's					
	Birth Weight	200 day growth	400 day growth	600 day growth	Milk
EBV	+1.4	+19	+38	+53	+10
ACC	71%	56%	58%	59%	44%
Raw Data					
Weight	P8	Rib	EMA	IMF %	

# 99 ROSEDALE EMPRESS N28 (P)

**Born:** 23/4/2017  
**Society ID:** MRN28E

FERNVALE TRAPPER  
ROSEDALE DARWIN (P)  
ROSEDALE GRACE A97  
**Sire: ROSEDALE H168E(P)**  
PARINGA NOVOTEL  
ROSEDALE BEATRIX D148 (P)  
ROSEDALE BEATRIX Z185 (P)

PINAY  
PALGROVE EXPO (P)  
PALGROVE ESTELLA 130 (P)  
**Dam: ROSEDALE EMPRESS H221E (P)**  
PARINGA NOVOTEL (P)  
ROSEDALE EMPRESS D99  
ROSEDALE EMPRESS W36 (P)



## Comments

**Top 10% 200, 400 & 600 Day Growth**  
**Top 15% Milk**

Photograph available at [www.auctionsplus.com.au](http://www.auctionsplus.com.au)

**Purchaser**

\$

## Index \$ Value

Domestic (\$)			Export (\$)		
+\$ 18			+\$ 28		
Charolais Group Breedplan EBV's					
	Birth Weight	200 day growth	400 day growth	600 day growth	Milk
EBV	+1.7	+18	+34	+54	+11
ACC	72%	56%	59%	58%	41%
Raw Data					
Weight	P8	Rib	EMA	IMF %	

# 100 ROSEDALE TANGO N26 (P)

**Born:** 10/5/2017  
**Society ID:** MRN26E

FERNVALE TRAPPER  
ROSEDALE DARWIN (P)  
ROSEDALE GRACE A97  
**Sire: ROSEDALE H168E(P)**  
PARINGA NOVOTEL  
ROSEDALE BEATRIX D148 (P)  
ROSEDALE BEATRIX Z185 (P)

MINNIE VALE DEPUTY (P)  
ROSEDALE ZINGER (P)  
ROSEDALE NICKY X7 (P)  
**Dam: ROSEDALE TANGO E240 (P)**  
2UP THE VEGEMITE KID (P)  
ROSEDALE TANGO U25  
MT WILLIAM J56E



## Comments

**Top 10% Milk**  
**Top 20% 600 Day Growth**  
**Top 25% 200 & 400 Day Growth**

Photograph available at [www.auctionsplus.com.au](http://www.auctionsplus.com.au)

**Purchaser**

\$

## Index \$ Value

Domestic (\$)			Export (\$)		
+\$			+\$		
Charolais Group Breedplan EBV's					
	Birth Weight	200 day growth	400 day growth	600 day growth	Milk
EBV	+0.8	+15	+29	+44	+13
ACC	70%	57%	59%	58%	47%
Raw Data					
Weight	P8	Rib	EMA	IMF %	

# 101 ROSEDALE EMPRESS N24E (P)

**Born:** 24/4/2017  
**Society ID:** MRN24E

FERNVALE TRAPPER  
ROSEDALE DARWIN (P)  
ROSEDALE GRACE A97  
**Sire: ROSEDALE H168E(P)**  
PARINGA NOVOTEL  
ROSEDALE BEATRIX D148 (P)  
ROSEDALE BEATRIX Z185 (P)

MINNIE VALE DEPUTY (P)  
ROSEDALE ZINGER (P)  
ROSEDALE NICKY X7 (P)  
**Dam: ROSEDALE EMPRESS D4 (P)**  
SEAWELL OFFSHORE  
ROSEDALE EMPRESS W85 (P)  
ROSEDALE EMPRESS S66 (P)



## Comments

**Top 10% Milk**  
**Top 25% Birth Weight**

Photograph available at [www.auctionsplus.com.au](http://www.auctionsplus.com.au)

**Purchaser**

\$

## Index \$ Value

Domestic (\$)			Export (\$)		
+\$			+\$		
Charolais Group Breedplan EBV's					
	Birth Weight	200 day growth	400 day growth	600 day growth	Milk
EBV	-0.3	+11	+21	+32	+12
ACC	73%	58%	60%	61%	47%
Raw Data					
Weight	P8	Rib	EMA	IMF %	

### 2017 Beef Farmer of The Year - Winner

Each year 18 of some of the nations best farmers are nominated from across Australia with three finalists from the following categories. Beef, Cropping, Dairy, Horticulture, Sheep and Lifestyle.

The Competition is run by The Weekly Times Newspaper and sponsored by Coles Supermarkets, this is the 7th year of the Competition. The awards night was held in Melbourne earlier in the year and attended by many of the nations agri-business leaders.

We were delighted to win the beef section and congratulations must also go to fellow finalists for 2017 (Minnamurra Speckle Parks and JAC Wagyu).



### Feedlot Trial Success

In the 2017/18 Beef spectacular Trial we were very pleased to be awarded Riverine Tender Cut Champions. Our team of Charolais cross steers also came third in feedlot profitability.

In the 2017 Royal Queensland Show we had another successful outing with Charolais/Angus steers winning the highest team MSA Index of the 100 day grain fed Export Competition. As a result the team were awarded 1st prize for Meat Eating quality, no mean feat in one of the nations largest feedlot trials.

We had a very successful result in the 2017/2018 Australian National Field day feedlot trial winning both 1st and 2nd in the carcass section as well as winning Overall Champion Team (The John Sharpe Perpetual Trophy) for the third time in the competitions history. The steers were charolais/shorthorn and bred at Guerie Homestead.



### Silver Medal Steer at the 2018 Royal Easter Show

A steer exhibited by St Johns College at Dubbo and donated by Rosedale Charolais won a silver medal in the 2018 Carcass judging at the Sydney Royal Easter show. The 16 month old steer weighed 612kg, scanned 15mm Fat on the Rump and 8mm fat on the Rib. His carcass dressed out at 58.4% and he achieved a marble score 2. The Steer was awarded 91.5 points/100 and earned a prestigious silver medal. On the hoof he was also voted champion charolais Steer in the Stan Hill team which scored 2nd overall. This follows on from our success last with a Rosedale sired steer winning Champion Carcass with 93 points.







# Join the Rosedale Ruby Supply Chain

Your chance to be part of a  
true gate-to-plate Program

## Supplier Specifications:

- Minimum 50% British Breed
- Up to 50% Rosedale Charolais
- No Bos-Indicus Content
- Milk Tooth preferred (2 tooth accepted)
- 400 -500 kg Empty Weight
- Currently accepting EU & Non EU
- 100% Hormone Free
- Attractive Feeder Rates to approved customers
- Carcase Feedback available on request

Contact James for further information







'Rosedale Charolais' 126 Rosedale Road, Browns Creek via Blayney NSW 2799

James Millner **m:** 0425 341 341 **e:** [millner@rosedalecharolais.com.au](mailto:millner@rosedalecharolais.com.au)

Michael & Jenny Millner **m:** 0409 682 339 **p:** (02) 6368 7195

[www.rosedalecharolais.com.au](http://www.rosedalecharolais.com.au)